



# **Mediterranean Almanac 2005-2006**

## **Supplement 2006**

**Imray Laurie Norie & Wilson Ltd**

# Imray Mediterranean Almanac 2005-2006

## Supplement 2006

Published by  
**Imray Laurie Norie & Wilson Ltd**  
Wych House St Ives  
Cambridgeshire PE27 5BT England  
☎ +44(0)1480 462114  
Fax +44(0)1480 496109  
Email [ilnw@imray.com](mailto:ilnw@imray.com)  
[www.imray.com](http://www.imray.com)  
2006

All rights reserved. No part of this publication may be reproduced, transmitted or used in any form by any means – graphic, electronic or mechanical, including photocopying, recording, taping or information storage and retrieval systems or otherwise – without the prior permission of the publishers.

© Imray Laurie Norie & Wilson Ltd 2005

ISBN 0 85288 777 9

British Library Cataloguing in Publication Data.  
A catalogue record for this book is available from the British Library.

### CAUTION

Every effort has been made to ensure the accuracy of this book. It contains selected information and thus is not definitive and does not include all known information on the subject in hand; this is particularly relevant to the plans, which should not be used for navigation. The publisher believes that its selection is a useful aid to prudent navigation, but the safety of a vessel depends ultimately on the judgement of the navigator, who should assess all information, published or unpublished, available to him.

The last input of technical information was October 2005.

This supplement to the *Imray Mediterranean Almanac 2005–2006* contains corrections accumulated during 2005. The corrections are listed in page order and have been produced from a number of sources, but in particular from *Admiralty Notices to Mariners* and reports from users.

The information is presented so that, unless detailed instructions are given, it can be substituted for or added to the existing text. In the case of lights, new lights are prefixed by the official reference number from the *Admiralty List of Lights Vol. D NP77* (Gibraltar) or *Vol. E NP78*.

The publishers invite users of this *Almanac* to submit corrections and make suggestions for improvements for inclusion in the 2007–2008 edition.

Imray Laurie Norie & Wilson  
November 2005

Page 8

### EMERGENCY RADIO & TELEPHONE SERVICES

Before Gibraltar add: '112 Pan-European Emergency Telephone Number'

#### SPAIN

Add:

'Cadiz MRSC

VHF Ch 74'

**Tarifa MRCC**

Amend VHF Channels to Ch 10, 67

**Tarragona MRSC**

Amend VHF Channels to Ch 74

Add:

'Palamos MRSC

VHF Ch 13'

Page 9

#### ITALY

Add: Call free 1530 for direct connection to Italian Coastguard.

Page 10

#### CROATIA

Add: Call free +9155 from mobiles or landline for 24hr connection to MRCC Rijeka.

From outside Croatia dial +385 51 9155.

Page 22

### COAST RADIO SERVICES

Amend as below:

#### TURKEY

	VHF	MF kHz
Bodrum	16, 27	
Oren	16, 27	
Kazakin	16, 28, 67	
Dilektepe	16, 03, 25, 67	
Palamut	16, 26, 67, 81	
Yumrutepe	16, 24, 67, 82	
Anamur	16, 25, 67, 84	
Cobandede	16, 04, 67, 82, 85	
Markiz	16, 25, 67, 83	

#### ATLANTIC ISLANDS

##### Azores

Horta CRS	11	2182
Faial	24, 25, 26	
Pico	23, 24, 26	
Sao Miguel	24, 25, 26	2182

##### Madeira

Porto Santo CRS	11	
Porto Santo	26, 28	
Madeira		2182, 2810, 2843

Pico da Cruz	25, 28	
Ponta do Pargo	23, 26, 27	

Page 23

### 3.7 TRAFFIC SERVICES

#### TURKEY

##### The Bosphorus

Note A new rail tunnel is under construction, running under the Bosphorus between Uskudar and Saray Burnu. Navigation is severely restricted in the vicinity, with port and starboard hand buoys indicating the useable ship channel. All local traffic including pleasure craft MUST monitor the VTS on VHF Ch13/14 (Bosphorus VTS sectors are listed in the box below).

Latest directions can be obtained from the websites [www.worldvtsguide.org](http://www.worldvtsguide.org) or [www.coastalsafety.gov.tr](http://www.coastalsafety.gov.tr) Navtex carries details of the works areas, and these are also accessible from the second website above.

## **Bosphorus Vessel Traffic Service Sectors**

	VHF
Turkeli	Ch 11
Kavak	Ch 12
Kandili	Ch 13
Kadykoy	Ch 14
Emergency Communications	Ch 06
Met Bulletins	Ch 67

*Page 30-37*

## **4.1 RADIO WEATHER SERVICES**

### **SPAIN**

Amend to:

Valencia Cartagena VHF Ch 10 Even H+15  
Alicante VHF Ch 11 Even H+15

### **GREECE**

#### **GSM weather forecast**

Dial 108 from a mobile phone. Give the area required for the forecast, and a 12/24hr forecast is given in English. Available throughout Greek waters.

#### **Olympia Radio MF**

#### **Weather forecasts**

Corfu, Limnos, Rhodes, Iraklion 0633, 0903, 1533, 2133

*Page 46*

## **4.6 WEATHER ON THE INTERNET**

### **Weather Online**

Add: [www.weatheronline.co.uk](http://www.weatheronline.co.uk)

### **ITALY**

Add: [www.meteoam.it](http://www.meteoam.it)

Italian aeronautical forecasts.

### **GREECE**

Add: [www.meteo.gr/sailingmapf.asp](http://www.meteo.gr/sailingmapf.asp)

Good detailed local area marine forecasts (in Greek but simple to navigate with clear graphics).

Add: [www.hnms.gr](http://www.hnms.gr)

Hellenic National Meteorological Service

Add:

### **CROATIA**

//[meteo.hr/index-en.php](http://meteo.hr/index-en.php)

National Met Service

### **ISRAEL**

[www.ims.gov.il](http://www.ims.gov.il)

Israeli Meteorological Service

*Page 50*

## **5.4 REGULATIONS COUNTRY BY COUNTRY**

### **CROATIA**

On entering Croatia, yachts must proceed to a port of entry. Immigration – passport control, and the harbourmaster are visited.

#### **CRUISING TAX**

On presentation and endorsement of the documents requested (below) the vessel will be issued with a vignette by the harbourmaster. It must be displayed where it may be easily inspected from outside the vessel.

The vignette covers:

- Safety of Navigation fee
- Light dues
- Croatian HO tariff
- Government Admin fee

In 2005 the vignette cost approx EURO 165 for a 12m yacht, valid for 12 months from the date of issue. There are reductions for renewals.

For details see the Croatian Ministry of Sea, Tourism, Transport & Development website [www.mmtpr.hr](http://www.mmtpr.hr) (Click on English – SEA – Nautics).

### **Documents**

#### **Crew List**

Foreign registered yachts must declare a 'Crew List' on entering Croatia. It includes crew and passengers. The list must be re-submitted each time the list changes. If there are no changes made, a yacht has no need to check in with the authorities until departing Croatia.

## **List of Persons**

Foreign registered yachts must declare a 'List of Persons' when replacing crew or passengers in Croatia. The maximum number of people on the list may not exceed 230% of the registered maximum for that vessel. The list must be re-submitted each time the list changes. The number of changes is not limited.

### **Evidence of Seaworthiness**

In accordance with the country of the vessel's flag. Harbourmaster may perform an inspection of the vessel.

### **Certificate of Competence**

In accordance with the country of the vessel's flag. If none available then the skipper must obtain a Croatian certificate of competence.

### **Evidence of Insurance**

Third party insurance.

### **Proof of Ownership**

Or proof of authority to use the vessel.

### **Other charges**

#### **TOURIST TAX**

A tourist tax is usually added to a marina bill in addition to normal rates. This tax amounts to less than EURO 1 per person per night. Children <12yrs are free. From 12-18yrs pay 50%.

## 6. LIGHTS

### Page 62 Lights

Amend Lts as follows and delete all RCs:

The following reference numbers refer to Admiralty List of Lights and Fog Signals Volume D (NP 77))

## Gibraltar

### 2438 Europa Point

Iso.10s49m19M 197°-vis-042°

Iso.10s49m19M 067°-vis-125°

Oc.R.10s15M+F.R.44m15M

042°-vis-067° Horn 20s

• 36°06'.58N 5°20'.69W

The following reference numbers refer to Admiralty List of Lights and Fog Signals Volume E (NP 78)

## Mediterranean – Spain

### 0018 La Duquesa Marina S head

Fl.G.7s8m5M

• 36°21'.2N 5°13'.7W

### PUERTO DE MÁLAGA

#### 0062 Málaga digue del este near root

Fl(3+1)20s38m25M

243°-vis-047°

• 36°42'.8N 4°24'.9W

### PUERTO EL CANDADO

#### 0072 Torre del Mar o Vélez

Fl(1+2)10s30m13M

• 36°44'.1N 4°05'.8W

### ROQUETAS DE MAR

Delete light 0092

### PUERTO DE GARRUCHA

#### 0110 Near Castillo de Jesús

Nazareno

Oc(4)13s19m13M

• 37°10'.4N 1°49'.4W

### PUERTO DE ESCOMBRERAS

#### 0126.1 Breakwater head

Fl.G.3s10m10M

• 37°34'.0N 0°58'.7W

#### 0126.2 Digue-muelle Bastarrebbe head

Fl(2)G.10m5M

• 37°34'.2N 0°58'.0W

### BAJO DE PORTMAN O DE LA BOLA

#### 0136.5 Los Ponchosos

Q(3)10s8m5M

• 37°37'.4N 0°41'.1W

### PUERTO DE GANDIA

#### 0193 Contradique head

Fl.R.5s9m5M

• 38°59'.7N 0°08'.8W

#### 0194 Digue Norte head

Fl.G.5s15m7M

• 38°59'.7N 0°08'.7W

### PUERTO DE CASTELLÓN DE LA PLANA

#### 0226 Faro

Oc(2+1)10s32m14M

Flare 1.8M SW

• 39°58'.2N 0°01'.7W

#### 0226.1 Digue de Levante head

Fl.G.5s13m5M

• 39°57'.9N 0°01'.7W

### PUERTO DE PEÑISCOLA

### 0234 Digue de Levante head

Fl.G.4s15m7M

• 40°21'.2N 0°24'.1E

## Islas Baleares

### ISLA DE IBIZA

#### 0263 Puerto de Ibiza. Isoloto

##### Botafoch breakwater head

Fl.G.3s10m7M

• 38°54'.7N 1°26'.2E

### ISLA DE MALLORCA

#### 0303 Puerto Deportivo El

##### Cocodrilo (Bonaire) breakwater head

Fl(3)R.10s7m5M

• 39°52'.0N 3°08'.6E

#### 0311.4 Cala Longa. Punta d'es

Forti

Fl(1+2)20s17m7M

• 39°22'.1N 3°14'.1E

#### 0314 Punta Salinas

Fl(2+1)20s17m13M SirenMo(S)15s

265°-vis-116°

• 39°16'.0N 3°03'.3E

#### 0316 Cabo Blanco

Oc.5s95m15M 336°-vis-115°

• 39°21'.8N 2°47'.3E

#### 0334 Cabo de la Mola

Fl(1+3)12s128m12M

• 39°31'.9N 2°21'.9E

### ISLA DE MENORCA

#### 0345 Entrance N side. Punta El bancal

Fl(3)R.9s10m5M

• 38°59'.8N 3°49'.5E

#### 0345.9 E point N shore Cala d'en

##### Busquets Dir Lt 045°

DirFl.WRG.5s9m5-3M

White sector marks centre of channel.

Red sector is to the N. Green sector to the S

• 40°00'.0N 3°49'.7E

#### 0346.4 At foot of cliff La Muralla

##### Dir Lt 064.5°

DirOc(2)WRG.9.5s8m5-3M

White sector marks centre of channel.

Red sector is to the North. Green

sector to the South.

• 40°00'.1N 3°50'.2E

#### 0351/0351.1 Puerto de Fornells Isla

##### Sargantana Ldg Lts 178.5°

Front Q.R.14m4M

Rear Iso.R.4s23m8M

• 40°02'.8N 4°08'.2E

## Mediterranean – Spain

### PUERTO DE LOS ALFAQUES

#### 0374 Digue de Abrigo head

Fl(2)R.8s8m6M

• 40°36'.6N 0°36'.3E

#### 0377 Cabo Tortosa

Fl.WR.6s18m14M 122°-W-052°-R-

122° Racon

• 40°43'.0N 0°55'.8E

### PUERTO DE TARRAGONA

#### 0386.2 REPSOL refinery

Fl(4)Y.20s5M

4Fl.Y.1 mark floating hose lines

• 41°04'.0N 1°13'.2E

#### 0386.6 Pantalán Enpetrol head

Fl.R.2.5s11m7M

• 41°04'.9N 1°12'.5E

#### 0386.72 Muelle de Galicia head

Fl(2)R.5s8m5M

• 41°05'.32N 1°12'.80E

#### 0388.12 Head

Fl.G.5s22m10M

Q.G on post marks marine farm

• 41°05'.0N 1°13'.2E

#### 0392.3 Tarraco International

##### Marina breakwater head

Fl(2)G.10s7m5M

• 41°06'.4N 1°15'.1E

### PUERTO DEPORTIVO DE

#### COMARRUGA

##### 0394.6 Digue Est head

Fl.R.5s7m5M

• 41°10'.7N 1°31'.7E

### PUERTO DEPORTIVO DE

#### SEGUR DE CALAFELL

##### 0394.8 Breakwater head

Fl(4)G.12s8m5M

• 41°11'.1N 1°36'.5E

### PUERTO DE BARCELONA

#### 0401 Digue del Este S head

Fl(3)G9s17m6M

• 41°20'.11N 2°10'.29E

#### 0405 NE elbow

Fl(4)R.9m5M

• 41°20'.46N 2°09'.94E

#### 0434.78 Sant Adria de Besos

##### breakwater head

Fl(4)G.12s10m5M

• 41°24'.5N 2°13'.8E

#### 0439.3 Digue de Levante

Fl(2)G.12s10m5M

• 41°28'.5N 2°18'.8E

### CADAQUÈS

#### 0484 Punta Cala Nans

Fl(4+1)25s33m8M

• 42°16'.1N 3°17'.1E

#### 0486 Cabo Creus

Fl(2)10s87m20M Aeromarine

• 42°19'.0N 3°18'.9E

### PUERTO DE LA SELVA

#### 0488 Punta Sernella

Fl.5s22m13M

176°-vis-272° and inside the harbour

• 42°20'.9N 3°11'.2E

#### 0489.2 Puerto Deportivo Llansá

##### breakwater head

Fl(3)R.10s8m5M

• 42°22'.3N 3°09'.7E

#### 0489.4 Contradique head

Fl(3)G.10s5m5M

• 42°22'.3N 3°09'.7E

### PORT BOU

#### 0491 Breakwater head

Fl.R.5s7m5M

• 42°25'.7N 3°10'.0E

## Mediterranean – France

### PORT DE BANYULS

#### 0496 Cap Béar

Fl(3)15s80m30M

146°-vis-056° Partially obscd over

Cabo Creus, Ilots Voisin and Cap

Cerbère

• 42°30'.9N 3°08'.2E

### PORT VENDRES

#### 0498.5

Q.G.9m7M

• 42°31'.3N 3°06'.8E

#### 0504 Môle Abri head

Oc(3)R.12s20m11M 110°-vis-287°

• 42°31'.4N 3°07'.0E

### LA NOUVELLE

**0522/0522-1 Lts in line 292°24' jetée sud head**

Front Q.23m14M

Rear 2M from front Q.57m17M

• 43°00'.8N 3°04'.2E

### PORT DE VALRAS

**0528 Digue NE head**

Fl.G.4s9m6M

• 43°14'.7N 3°18'.0E

### 0538 Îlot Brescou

Fl(2)WR.6s22m13/10M

113°-R-190°-W-113°

2F.R on radio masts 1.9M NW

• 43°15'.8N 3°30'.1E

### PORT DE MARSEILLAN-PLAGE

**0547 Épi Dellon middle**

Fl(2)R.6s21m10M 080°-vis-268°

• 43°23'.9N 3°43'.2E

### 0550 Breakwater E head

Fl(3)R.12s15m7M

063°-vis-253°

• 43°23'.8N 3°42'.5E

### 0551 W head

Oc.G.4s10m6M

• 43°23'.6N 3°42'.1E

### 0552 Nouvelle digue head

Oc.R.4s10m7M

• 43°23'.7N 3°42'.2E

### 0557 E mole head

Q.G.6m8M

• 43°24'.1N 3°42'.2E

### 0557-4 Digue sud E head

Fl(3)R.12s9m6M

• 43°25'.2N 3°44'.9E

### PORT AMBONNE

**0539 Jetée SW head**

Fl(2)R.6s9m6M

• 43°17'.5N 3°31'.8E

### PORT DE MARSEILLAN-PLAGE

**0542 Digue ouest head**

Fl.R.4s7m8M

• 43°19'.0N 3°33'.7E

### 0542-1 Digue Est

Fl.G.4s8m5M

• 43°19'.1N 3°33'.6E

### SÈTE

**0544 Mont Saint-Clair**

Fl.5s93m29M

013°-W (unintens)-104°-W-013°

• 43°23'.7N 3°41'.4E

### AIGUES MORTES

**0582-2 Jetée ouest head**

Oc(2)R.6s9m7M F strip lights on 2 corners of jetty

• 43°32'.2N 4°07'.9E

**0590 Port Gardian Digue ouest head**

Fl.R.4s9m7M 117°-vis-075°

• 43°26'.8N 4°25'.4E

### 0592 La Gacholle

Fl.WRG.4s17m12/9M

300°-G-019°-W-065°-R-085°

• 43°27'.3N 4°34'.2E

**Delete 0600-2 Faraman buoy**

### GOLFE DE FOS

**0603-5/0603-51 Port de Carteau**

**Ldg Lts 242-8°**

Front Q.5m7M

Rear 227m from front Q.10m7M

• 43°22'.5N 4°50'.6E

**0603-5/0603-51 Port de Carteau**

**Ldg Lts 243°**

Front Q.5m7M

Rear 227m from front Q.10m7M

• 43°22'.5N 4°50'.6E

**0604/0604-1 Port de Fos Ldg Lts**

**287°**

Front Oc(2)6s11m20M

277°-intens-297°

Rear 520m from front

Oc(2)6s29m23M

• 43°24'.4N 4°52'.1E

**0605-2 Darse No.1 Dir Lt 340°**

DirOc.WRG.4s25m15-12M

333°-G-339°-W-341°-R-344°

• 43°26'.1N 4°52'.3E

**0609/0609-1 Ldg Lts 036-7°**

Front Q.R.11m11M

027°-intens-047°

Rear 167m from front Q.R.16m15M

026°-intens-048°

• 43°24'.3N 4°59'.6E

**0609-4/0609-41 Ldg Lts 029-8°**

Front F.R.11m12M

020°-intens-040°

Rear 184m from front F.R.17m15M

019°-intens-041°

• 43°24'.2N 4°59'.4E

**0609-8 Marina E jetty head**

Iso.G.4s6m8M

• 43°24'.1N 4°59'.1E

### PORTS DE MARSEILLE

**0637 E side**

IsoR.4s10m6M

• 43°20'.7N 5°19'.7E

### PORT DE POINTE ROUGE

**0684 Îlot Tiboulen-de-Marie**

Fl.WG.4s58m11/8M

316°-G-327°-W-142°-G-shore

• 43°12'.8N 5°19'.6E

### TOULON

**0719 Pointe de la Vielle head**

Q.R.13m5M

• 43°05'.1N 5°55'.3E

**0726 Port de Commerce. Dars du**

**Mourillon. Quay Fournell head**

Oc(2)R.6s7m6M

• 43°07'.0N 5°55'.8E

**0727 S side**

Iso.G.4s17m7M

• 43°06'.9N 5°55'.9E

**0729 Darse Vielle. W head**

Q.R.7m7M

• 43°07'.1N 5°55'.8E

**0730 E head N**

Q.G.8m7M

• 43°07'.1N 5°55'.8E

**0734 Port Militaire. Grands**

**Bassins Vauban. SW corner**

Fl(4)G.12s2m6M 261°-vis-091° 3 W

floodlights on a quay

• 43°06'.9N 5°55'.4E

**0739 Darse de Missiessy entrance**

**W side**

Iso.R.4s5m7M

• 43°07'.0N 5°54'.8E

**0740 Entrance W side**

Iso.R.4s5m7M

43°07'.0N 5°54'.8E

**0740-2 E side**

Iso.G.4s6m7M

• 43°07'.0N 5°54'.8E

### ÎLES AND RADE D'HYÈRES

**0752 Port de Porquerolles pier head**

Oc(2)WR.6s8m13/10M

150°-W-230°-R-150°

• 43°00'.3N 6°12'.0E

**0764 Cap Bénat**

Fl.R.5s60m21M 277°-vis-288°, 327°-

vis-330°, 001°-vis-042°, 060°-vis-096°

Obscured by Île de Porquerolles 042°-

060°, by Île du Levant 288°-327° and

by Îles du Port Cros and Bagaud

330°-001° Reserve light 176°-vis-118°

• 43°05'.3N 6°21'.8E

### SAINTE MAXIME-SUR-MER

**0791 Les Issambres S breakwater**

**head**

Fl(2)WG.6s8m11/8M

289°-W-°349°-G-289°

• 43°20'.4N 6°41'.2E

### BAIE DE SAINT RAPHAËL

**0792 Saint Raphaël jetée sud head**

Fl(3)G.12s13m10M

• 43°25'.35N 6°45'.82E

### SANTA LUCIA

**0793 Bassin sud breakwater ouest**

**head**

Oc(2)WR.6s10m10/7M

040°-W-057°-R-084°-W-122°-R-040°

• 43°24'.5N 6°46'.9E

### LA RAGUE

**0798-4 Jetty head**

Fl(4)G.15s9m9M

• 43°30'.8N 6°56'.4E

### MANDELIEU-LA-NAPOULE

**0812-2 Le Couton S breakwater E**

**head**

Fl(2)R.6s6m5M 138°-vis-091°

• 43°33'.6N 7°07'.2E

### BAIE DES ANGES

**0818-6 Marina S breakwater head**

Fl(2)R.6s6m7M

• 43°38'.0N 7°08'.5E

**0818-7 E breakwater head**

Fl(2)G.13m9M

• 43°38'.0N 7°08'.5E

### ANTIBES

**0819 Digue de large head**

Fl.R.4s15m11M

• 43°35'.4N 7°08'.0E

**0819-6 Epi du Fort Carré head**

Fl.G.4s10m5M 186°-vis-048°, 218°-

unintens-003°

• 43°35'.3N 7°07'.9E

### NICE

**0822 Jetée du large head**

Fl.R.5s21m20M

• 43°41'.4N 7°17'.3E

**0823 E pierre head**

Fl.G.4s5m7M

• 43°41'.5N 7°17'.4E

**0824 Bassin du Commerce. W side**

Fl(2)R.6s6m7M

• 43°41'.5N 7°17'.3E



## Mediterranean – Corse

### PORT DE CAMPOLORO

#### 0863 E jetty head

Fl.R.4s7m6M

- 42°20'.5N 9°32'.5E

### PORTO VECCHIO

#### 0870 Dir Lt 224.5°

DirIso.WRG.4s9m11-9M

208.5°-G-223.5°-W-225.5°-R-240.5°

- 41°35'.2N 9°17'.5E

#### 0870.6 Marina E breakwater head

Fl(2)R.6s5m6M

212°-vis-302°

- 41°35'.4N 9°17'.2E

#### 0870.8 NE breakwater head

Fl(2)G.6s4m5M

200°-vis-290°

- 41°35'.5N 9°17'.3E

### BONIFACIO STRAIT

#### 0888 Cap de Feno

DirFl(4)15s21m21M

109.4°-intens-111.4° &

Fl(4)WR.15s23m7/4M

Auxiliary 150°-R-270°-W-150°

Reserve light range W 5M, R 3M

- 41°23'.6N 9°05'.8E

### AJACCIO

#### 0919 Research Station jetty head

Fl.G.4s5m6M

- 42°34'.9N 8°43'.5E

### SANT AMBROGIO

#### 0928 Port de L'Île Rousse jetty head

Iso.G.4s12m8M

Obscured by Grand Île Rousse 111°-

143° and by Île Sicota when bearing

less than 091°

- 42°38'.5N 8°56'.4E

#### 0932 Pointe de Fornali

Fl.G.4s14m6M 000°-unintens-090°

- 42°41'.3N 9°16'.9E

### PORT DE SAINT

### FLORENT

#### 0933 Jetée nord head

Fl(2)WR.6s6m9/6M

080°-W-116°-R-080°

- 42°40'.8N 9°17'.9E

## Mediterranean – Sardegna

### BONIFACIO STRAIT

#### 0937/0937.1 Isolotto Muncica Ldg

Lts 195.5°

Front pier head S corner

Oc.R.4s12m3M 181.5°-vis-211.5°

Rear 0.7M from front Fl.R.4s45m7M

151.5°-vis-241.5°

- 41°14'.2N 9°11'.7E

#### 0940 Isola Razzoli NW point

Fl.WR.2.5s77m19/15M

022°-W-092°-R-137°-W-237°-R-320°

Reserve light W17M R13M Racon

- 41°18'.4N 9°20'.4E

### ISOLA DELLA MADDALENA

#### 0990.2 Secca du Piagge

VQ(9)10s5m5M

- 41°10'.9N 9°23'.33E

### CALA DI VOLPE

#### 1009.56 Porto Rotondo shelter

mole

Fl.WR.5s7m7/5M

215°-R-240°-W-215°

During summer season 2 buoys (stbd lateral with ▲ topmark Fl.G.5s2m2M and a port hand lateral with ■ topmark Fl.R.5s2m2M) are laid at the entrance to the tourist landing.

- 41°01'.8N 9°32'.6E

#### 1010.2 Golfo degli Aranei Marine Farm

Fl.Y.4s5m6M

- 40°59'.0N 9°38'.0E

### PORTO DI OLBIA

#### 1015 Entrance channel N

Fl.G.5s5m5M

- 40°55'.4N 9°34'.3E

#### 1015.2 S

Fl.R.5s5m5M

- 40°55'.3N 9°34'.3E

### PORTO ARBATAX

#### 1052.55 Foxi Marina de Capitana outer mole head

Fl.G.3s5m5M

- 39°12'.6N 9°17'.8E

#### 1052.56 Inner mole head

Fl.R.3s5m5M

- 39°12'.6N 9°17'.8E

### PORTO DI CAGLIARI

#### 1065.6 New industrial port

Fl.3s6M

- 39°13'.3N 9°03'.3E

### SARROCH

#### 1072 Capo Spartivento

Fl(3)15s81m18M

240°-vis-085°, 093°-vis-094°

Reserve light 18M

- 38°52'.6N 8°50'.7E

### PORTO DI SANT'ANTIOCO

### (PONTE ROMANO)

#### 1080 Main light

Fl.5s23m15M

Reserve light 11M

- 39°03'.5N 8°28'.5E

### CANALE DI SAN PIETRO

#### 1093.5 Secca dei Marmi NW

Fl.Y.3s6m4M (in line with Front Bn

241.9°)

- 39°09'.0N 8°20'.0E

#### 1094 SSW shore of port

Front F.R.11m6M (in line with Secca

dei Marmi NW 241.9°)

- 39°08'.4N 8°18'.6E

#### 1094.1 Southwestwards

Rear Fl.R.3s75m9M 221°-vis-251°

39°07'.9N 8°17'.6E

### GOLFO DI ORISTANO

#### 1105.1/1105.11 Porto di Oristano

Ldg Lts 130°

Front Iso.2s10m8M 115°-vis-145°

Rear 900m from front

Oc.4s20m10M 125°-vis-135°

- 39°51'.58N 8°32'.4E

### PORTO CONTE

#### 1133.5 Punta Salippi

Fl.WRG.3s6m5-4M

293.3°-G-297°-W-305°-R-308.7°

- 40°59'.2N 8°12'.8E

### PORTO DI STINTINO

#### 1134.2 Shoal

Fl.G.4s6m8M

- 40°56'.12N 8°13'.95E

Delete 1145.2

## Mediterranean – Italy

### MARINA DEGLI AREGAI TOURIST PORT

#### 1155 Outer mole head

2F.R.(vert)9m5M

- 43°50'.2N 7°55'.0E

#### 1155.3 INNER PIER

F.R.5m5M

43°50'.2N 7°55'.0E

1155.4

2F.G.(vert)9m5M

- 43°50'.2N 7°54'.9E

### IMPERIA

#### 1158 Molo Corto head

Fl.G.3s8m8M Safety distance 30m

252°-vis-044°

- 43°52'.6N 8°01'.4E

#### 1164 Molo Corto head

Fl(2)R.7s8m8M Safety distance 25m

- 43°53'.1N 8°02'.5E

### SAN BARTOLOMEO AL MARE

#### 1168.4 Marina di Andora Outer

breakwater head

Fl.R.3s7m5M

- 43°56'.9N 8°08'.5E

#### 1168.5 Inner mole head

Fl.G.3s7m5M

- 43°57'.0N 8°09'.5E

### PORTO DI GENOVA

#### 1208.6 Diga Forano jetty head

Q.G.10m5M

- 44°24'.1N 8°52'.6E

1211.3

No.33

Oc.G.2s8m6M

- 44°25'.0N 8°48'.9E

1212.3

No.37

Fl.R.1.5s8m7M

- 44°25'.1N 8°49'.4E

### RADA DI LA SPEZIA

#### 1282 Pontone Societa Arcola

Fl.Y.5s7m5M

- 44°05'.7N 9°51'.3E

1282.2

Fl.G.3s7m5M

44°05'.7N 9°51'.45E

1282.4

Fl.R.3s7m5M

44°05'.80N 9°51'.48E

### MARINA DI CARRARA

#### 1328.5 Dir Lt 320°

DirWRG.30m12-10M

PEL 315°-F.G-317.5°-AIWG-319.5°-

FW-320.5°-AIWR-322.5°-F.R-325°

- 44°02'.08N 10°01'.17E

Reserve light range 11M

### PORTOVECCHIO DE PIOMBINO

#### 1460 Torre de Sale outer mole elbow

Oc.3s9m5M (Fl(2)G.6s2M, Fl.G.5s2M

ESE)

- 42°56'.6N 10°36'.1E

### CASTIGLIONE DELLA PESCAIA

#### 1471 Puerto Turistico San Rocco

mole right entrance

Fl.G.3s7m5M

- 42°42'.9N 10°58'.6E

#### 1471.3 Left entrance

Fl.R.3s7m5M

- 42°42'.9N 10°58'.6E

### CIVITAVECCHIA

#### 1509 Scogliera della Mattonara N

## head

Fl.R.3s7m5M

- 42°06'.42N 11°48'.28E

## 1510 Antemurale Colombo head

Fl.G.3s14m8M

Breakwater extension works marked

by Fl.G.4s4m8M

- 42°06'.18N 11°46'.07E

## PORTO DI POZZUOLI

Delete 1625

## PORTO DI NAPOLI

Delete 1647

## SORRENTO

### 1698 Mole head

Fl.G.3s9m5M

- 40°37'.8N 14°22'.6E

## MARINA DI CASALVELINO

### 1739·7 Outer mole head

Fl.G.3s8m5M

- 40°10'.5N 15°06'.5E

### Inner mole head outer arm

Fl.R.3s8m5M

- 40°10'.5N 15°06'.5E

### 1754·1 Amantea Marina outer breakwater head

Fl.R.3s6m6M

- 39°03'.2N 16°05'.5E

### 1754·3 Inner breakwater head

Fl.G.3s6m6M

- 39°03'.3N 16°05'.5E

## Mediterranean – Isole Eolie

### ISOLA SALINA

#### 1798 Capo Faro

LFl.6s56m18M

137°-vis-357° but only a faint light is perceptible 123°-137°

Reserve light range 11M

- 38°34'.8N 14°52'.2E

## Mediterranean – Sicilia

Delete 1809

## PORTO PALO

### 1884·5 Punta di Portopalo

LFl.WR.5s8m7/4M

205°-R-230°-W-205°

- 36°40'.0N 15°07'.8E

## PORTO PALO DI MENFI

### 1929·3 Inner mole head

Fl.G.4s8m5M

- 37°34'.4N 12°54'.6E

## SAN VITO LO CAPO

### 1987 Fish harbour outer mole head

Fl.G.5s7m5M

- 38°10'.9N 12°44'.1E

## CASTELLAMMARE DEL GOLFO

### 1993 Balestrate outer mole head

Fl.G.3s8m6M

- 38°03'.4N 13°00'.1E

## PORTO DI PALERMO

### 2013 Diga Foranea head

LFl.G.5s5M

- 38°07'.34N 13°22'.78E

## TERMINI IMERESE

### 2030 Molo di Sottoflutto

Fl.R.3s7m5M

- 37°59'.1N 34°42'.7E

### 2035 Pontile ENEL head

Q.R.20m5M

- 37°59'.2N 13°45'.2E

## PORTICELLO SAN FLAVIA

### 2038·1 Porticciolo di Cap

D'Orlando

Fl.5s5M

- 38°09'.5N 14°46'.4E

## PORTO DI MILAZZO

### 2044 Molo Poraneo head

LFl.G.5s12m8M

4 F (fishing) at Spiaggia di Spadafora 6M E

- 38°12'.9N 15°15'.0E

### 2045 85m off Pontile di ponente pier No.1

2F.G(vert)16m5M

- 38°12'.7N 15°15'.8E

### 2045·2 190m off Pontile di levante

F.GR(vert)10m5M

- 38°12'.8N 15°16'.2E

### 2045·3 Pier No.3 head

2F.R(vert)12m5M

- 38°12'.70N 15°16'.49E

## Malta & Adjacent Islands

### GHAWDEX (GOZO)

#### 2064 Ricasoli breakwater head

Q.R.11m6M 120°-obsd-157° when firing or searchlight practices are taking place. F.Y occas 540m ESE

- 35°54'.0N 14°31'.4E

## ISOLA DI PANTELLERIA

### 2098·2 W end

Fl.Y.2s8M

- 36°50'.01N 11°56'.72E

### 2100 Molo Cidonio Dir Lt 232°

DirIso.WRG.2s8m7M 213·5°-G-228·5°W-235·5°-R-258·5°

- 36°49'.95N 11°56'.22E

## Ionian Sea – Italy

## PORTO DI CROTONE

### 2126 Ciro Marina Molo Foraneo head

Fl.R.3s5M

Lights are located on spar jetties within harbour

- 39°22'.4N 17°08'.3E

## TARANTO

### 2144 W mole head

F.R.8m5M

- 40°26'.7N 17°14'.8E

### 2144.4 Industrial harbour jetty

#### No.2 head SE corner

F.RG(vert)10m5M

- 40°28'.4N 17°13'.0E

#### • 2144.42 SW corner

F.GR(vert)10m5M

- 40°28'.4N 17°13'.0E

### 2150 Canal Navigabile Ldg Lts 193°

#### Secca della Tarantolla head

Front Fl.WG.3s.12m11/9M

057°-G-187·5°-W-198·5°-G-025°

Safety distance 150m for deep draught vessels

- 40°26'.8N 17°37'.7E

### 2153 W side S end Castel San

Angelo

F.R.8m6M Fl.Y occas 4m below the

F.R

- 40°28'.3N 17°14'.1E

### 2153·6 N end

F.R.8m6M Fl.Y occas 4m below the

F.R

- 40°28'.5N 17°14'.3E

### 2154 E side. S end

F.G.8m6M

- 40°28'.3N 17°14'.1E

### 2154·6 N end

F.G.8m6M

- 40°28'.5N 17°14'.1E

### 2159 Buffoluto jetty head

2F.R(vert)7m6M

- 40°29'.1N 17°16'.7E

### 2160 Outer Industrial Harbour approach

Q(6)+LFl.15s6M

- 40°26'.2N 17°08'.0E

### 2160·2/2160·4/2160·6

Q(9)15s6M

- 40°27'.2N 17°06'.5E-40°28'.9N

17°06'.6E

### 2162 diga Frangiflutti N head

Fl.G.5s14m8M

40°29'.5N 17°08'.3E

### 2162·4 Diga Sottoflutto head

Fl.R.5s14m8M

- 40°29'.7N 17°08'.7E

## GALLIPOLI

### 2174·25 La Terra Rocks

Fl(2)6s7m5M

- 39°53'.0N 18°07'.1E

### 2176·1 S terrace

Oc.R.4s100m11M

094°-vis-106° over Secche di Ugento

- 39°47'.7N 18°22'.1E

## SANTA MARIA DI LEUCA

### 2176·5 Harbour mole head

Fl.G.5s9m7M Reserve light 8M

- 39°47'.7N 18°21'.7E

### 2176·6 Spur

Fl(2)G.5s8m6M

- 39°47'.87N 18°21'.7E

### 2176·7 Inner mole head

Fl(2)R.5s8m6M

- 39°47'.8N 18°21'.7E

## Adriatic Sea – Italy

### 2178 Capo d'Otranto

Fl.5s85m18M

- 40°06'.3N 18°31'.2E

## PORTO DI OTRANTO

### 2193 Power Station

Q.Y.8m5M Marks water outfall

- 40°33'.9N 18°03'.4E

## PORTO DI BRINDISI

### 2198 Diga di Punta Riso head

Fl(2)G.10s12m5M

- 40°39'.7N 17°59'.8E

### 2202 Castello a Mare

Fl(4)20s28m21M Reserve light

Fl(4)20s19M

- 40°39'.3N 17°58'.1E

## CALA PORTECCHIA

### 2240 Darsena di Levante S side

#### Molo de Ridosso head

F.GR(vert)8m6M

1m apart

- 41°08'.3N 16°52'.0E

### 2242 Molo Pizzoli head

2FG(vert)11m6M

1m apart

- 41°08'.0N 16°51'.7E

## PORTO DI MANFREDONIA

### 2281 Porto Industriale outer mole head

Oc.G.3s10m7M

- 41°36'.7N 15°57'.0E

**2282 Industrial mole head**  
Oc.R.3s10m7M

- 41°37'.0N 15°56'.9E

**2282-2 Refuge harbour mole head**  
Fl.R.3s10m6M

- 41°53'.4N 16°10'.9E

**2288-3 Outer mole head**  
Fl.G.3s10m6M

- 41°53'.4N 16°10'.4E

**ISOLE TREMITI**

**2297 Isola San Nicola N end**  
Fl(4)15s85m12M Reserve light 7M.  
Obscd over Punta S Marina within  
0.3M

- 42°07'.4N 15°30'.6E

**ANCONA**

**2346 Molo Foraneo nord head**  
Fl.R.4s11m8M Horn Mo(N)45s  
277°-vis-224° Racon

- 43°37'.5N 13°29'.6E

**2346-5 Detached breakwater SW end**  
Fl.R.3s5M

- 43°37'.47N 13°29'.27E

**CATTOLICA**

**2390 Riccione E mole head**  
Fl.3s10m5M Horn Mo(M)45s

- 44°00'.5N 12°39'.5E

**2390-2 W mole head**  
Fl.G.3s10m5M

- 44°00'.42N 12°39'.43E

**CESENATICO**

**2404 E Mole root**  
Fl(2)6s18m15M  
Reserve light range 8M  
Numerous oil rigs, some marked by  
lights and fog signals, lie within the  
area between one and 6M NE

- 44°12'.4N 12°24'.1E

**2405 E mole head**  
Fl.R.5s8m8M Horn Mo(R)45s

- 44°12'.5N 12°24'.3E

**PORTO DI RAVENNA**

**2417-8**  
Fl(2)10s5m5M Marks a wreck

- 44°29'.6N 12°21'.7E

**2422 N mole head**  
Fl.G.4s7m8M

- 44°29'.70N 12°17'.41E

**PORTO GARIBALDI**

**2429 Shelter mole head**  
Q.R.9m5M

- 44°40'.6N 12°15'.3E

**BOCCHE DEL PO**

**2438**  
Fl(3)Y.9s2m5M

**Marks mussel culture zone**

- 44°53'.68N 12°32'.04E

**ISOLA ALBARELLA**

**2443-1 Porto Levante W mole head**  
Fl(2)G.10s9m6M

- 45°04'.5N 12°21'.7E

**2443-15 E mole head**  
Fl(2)R.10s9m6M

- 45°04'.6N 12°22'.2E

**2445 North-eastwards**  
Fl.Y.5s5m5M Marks mussel culture  
zone

- 45°07'.2N 12°27'.5E

**2451 Forte San Felice NW point**  
Fl(2)R.7s6m8M Horn Mo(N)20s

- 45°13'.8N 12°17'.4E

**2453 S breakwater head**  
Fl.R.3s11m8M Horn Mo(S)45s

- 45°13'.7N 12°18'.9E

**2454 S side**  
Fl.R.3s6m5M

- 45°13'.93N 12°18'.03E

**2454-5**  
Fl.R.3s6m5M

- 45°13'.94N 12°18'.62E

**2455-4 N side**  
Fl.G.3s6m5M

- 45°14'.01N 12°18'.60E

**Oceanographic Platform**  
Mo(U)15s  
F.R.3M Horn Mo(U)30s

- 45°18'.8N 12°30'.9E

**PORTO DI MALAMOCCO**

**Rocchetta Side**  
Fl(3)G.10s6m7M Horn Mo(D)45s  
Works in progress marked by 2 lit  
yellow beacons (T) 2004

- 45°20'.3N 12°18'.7E

**2465**  
Fl.10s7m6M

- 45°19'.4N 12°23'.1E

**2465-4**  
Fl(2)R.6s6m6M

- 45°19'.5N 12°22'.1E

**2465-5**  
Fl(2)R.6s6m5M

- 45°19'.7N 12°21'.4E

**2465-55**  
Fl(2)G.10s6m5M

- 45°19'.8N 12°21'.4E

**2466 N breakwater head**  
Fl.G.5s818m8M Mo(M)45s Racon

- 45°20'.0N 12°20'.7E

**2467 S breakwater head**  
Fl.R.5s16m8M

- 45°19'.8N 12°20'.4E

**2468 Forte San Pietro. Palata dell  
Ceppe jetty head**  
Fl(3)R.10s11m8M

- 45°20'.1N 12°19'.1E

**2469-6 Canale S Leonardo S side**  
Fl.R.4s6m5M

- 45°20'.3N 12°17'.9E

**2470 N side**  
Fl.G.4s6m8M Horn Mo(N)30s

- 45°20'.4N 12°18'.0E

**2470-3 S side**  
Fl(2)R.10s6m5M

- 45°20'.63N 12°16'.41E

**VENEZIA PORTO DI LIDO**

**2486-1 Isola di Murano**  
Rear 1.72M from front Oc.6s37m17M  
Aeromarine  
Reserve light range 12M  
**Dir Lt 300°40'** DirOc.6s21M Vis over  
1° only  
Reserve light range 11M

- 45°27'.2N 12°21'.3E

**PORTO SANTA MARGHERITA  
DI CAORLE**

**2506 W mole**  
Fl.R.3s5M

- 45°35'.2N 12°51'.9E

**2506-4 E Mole**  
Fl.G.3s5M

- 45°35'.2N 12°52'.0E

**2508 Caorle point E of town**  
Fl(2)6s12m14M

- 45°36'.0N 12°53'.6E

**LIGNANO SABBIA DORO**

**2519-5**  
Fl.2s6m6M

- 45°39'.7N 13°09'.7E

**BAIA DI MUGGIA**

**2594 San Rocco Marina. Outer  
breakwater head**  
Fl.G.5s8m5M

- 45°36'.58N 35°45'.16E

**2594-1 Inner breakwater head**  
Fl.R.5s8m5M

- 45°36'.56N 13°45'.12E

**VALLONE DI MUGGIA**

**2603/2603-1 Porto Industriale Ldg  
Its 063°74'**  
Front F.R.10m10M  
058.2°-vis-069.2°  
Rear 150m from front  
F.R.13m10M 058.2°-vis-069.2°

- 45°36'.8N 13°48'.8E

## Adriatic Sea – Croatia

**LUKA PULA**

**2740 Pličina Fenoliga**  
Fl.R.2s8m5M

- 44°45'.8N 13°54'.2E

**2749 Bodulas SW of islet**  
Fl(2)G.5s8m5M

- 44°47'.4N 13°56'.9E

## Adriatic Sea – Albania

**GJIRI SARANDES**

**3724-5 SE side**  
Fl.9s17m6M

- 39°50'.8N 20°01'.4E

## Adriatic Sea – Greece

**AMVRAKIKÓS KÓLPOS**

**3820 Ákra Kopraina**  
Fl(2)WR.16s9m5/3M  
169°-W-349°-R-169°

- 49°01'.8N 21°04'.6E

**ÓRMOS DHREPÁNOU**

**3848 Atoko Islet S point**  
Fl.6s25m10M

- 38°28'.5N 20°48'.4E

**KEFALLINÍA**

**Delete 3902 Nísís Pontikos W side**

**3901-5 Provati Islet S point**  
Fl.5s10m6M

- 38°27'.4N 21°02'.7E

**3903 Navagio Rock**  
Fl(2)10s8m6M

- 38°26'.6N 21°02'.9E

**NISÍS PETALÁ**

**3905 Makri Island N point**  
Fl.4s29m6M

- 38°22'.5N 21°01'.5E

**KORINTHIA KÓLPOS**

**3960 Ormos Galaxidiou Nisida  
Apsifia (on the E point of Apsifia  
Island**  
F.7s13m5M

- 38°22'.8N 22°42'.2E

**3963-2 Marina breakwater head**  
Q.R.7m5M

- 38°25'.86N 22°25'.40E

**3964 Akra Makry-Nicolas**  
Fl.4.5s17m5M

- 38°17'.0N 22°33'.1E



## Aegean Sea – Greece

### ÓRMOS FALÍROU

Delete 4191

### STENÓN MAKRÓNISOU

4208·5 Ormos Gaidhouromandra

(Olympic) Marina S mole head

Fl.R.4s7m12M

- 37°41'·8N 24°03'·7E

### NÍSOS SÉRIFOS

Delete 4235

### NÍSOS FOLÉGANDROS

4256 Ákra Asprópounda

Fl(3)30s70m17M

306°-vis-138°

- 36°38'·0N 24°51'·7E

4258 Órmos Karavostási entrance

Fl.WR.6s15m10/7M

202°-R-248°-W-322°-R-344°-W-096°

- 36°37'·0N 24°57'·2E

### NÍSOS SÍKINOS

4262 Ákra Fanári

Fl.5s33m9M

- 36°42'·95N 25°15'·58E

### NÓTIOS EVVOÍKÓS KÓLPOS

Amend 4358 to 4357

### NÍSOS SKÓPELOS

4475·5 Limín Skopélou N

breakwater head

Fl.G.2s7m6M

- 39°07'·47N 23°44'·12E

### KOLPOS THESSALONÍKIS

4498 Ákra Megálo Émvolon

Horn 60s

335°-R-025°-W-244°

- 40°30'·2N 22°49'·1E

### LIMIN THESSALONÍKIS

4505 Detached breakwater W end

Fl.G.4s14m7M

Q.R marks works in progress 0·5M W

and Q.G 0·8m W (T) 2005

- 40°38'·0N 22°55'·4E

### NÍSOS THÁSOS

4547 Ákra Prínos

Fl.5s7m7M

- 40°45'·7N 24°33'·8E

## Aegean Sea – Greece & Turkey

### BOZCAADA

Amend 4569·5 to

4570Yenikoy Fishing Harbour

breakwater

Fl.G.5s11m5M

- 39°57'·6N 26°09'·5E

Delete 4569·6

### NÍSOS LÉSVOS

Amend 4598·4 to

4598·5 Órmos Sigri berth NW

corner

Fl.2s6m5M

- 39°12'·8N 25°51'·0E

## Aegean Sea – Turkey

### MITILÍNI STRAIT

4615·3 Dolap Adasi

Fl.5s5m8M

- 39°20'·8N 26°40'·9E

### İZMİR KÖRFEZİ

4618 Eskifoça Fener Adasi

Fl.5s25m12M

- 38°40'·6N 26°42'·7E

### 4620 Değirmen Burnu

Fl.5s17m8M

- 38°40'·2N 26°44'·7E

### 4622 Uzan Ada Kösten

Fl(3)15s50m12M

- 38°32'·5N 26°42'·8E

### 4622·05

Q.R.10M

- 38°31'·2N 26°38'·8E

### 4626 Izmir breakwater N head

Fl.G.7m7M

- 38°25'·8N 27°07'·9E

### 4627 Izmir breakwater S head

Fl(2)R.6s7m7M

- 38°25'·4N 27°07'·6E

## Aegean Sea – Greece

### NÍSOS SÁMOS

Delete 4666

### 4666·2 Prasonisi Island

Fl(2)7s16m7M

- 37°47'·87N 26°57'·77E

### NISÍS KALÓLIMNOS

4708 Nisidha Kalólimnos

(Kalolimnos Safonidhi)

Fl.3s29m7M

122°-vis-055°

- 37°03'·6N 27°06'·4E

## Aegean Sea – Greece & Turkey

4709 Topan Adasi (Atsaki)

Fl.5s54m7M

- 37°00'·4N 27°10'·9E

## Aegean Sea – Greece

### NISÍDHA LIPSÍOÍ

4773 Ákra Gátos

Fl.3s27m6M 243·5°-vis-088·5°

- 37°17'·6N 26°44'·9E

## Aegean Sea and Approaches – Kríti – Greece

### LIMÍN KHANIÓN

4784 Ákra Dhrépanon

Fl(3)30s54m20M

066°-vis-324° R lights on mast 500m

SSE

- 35°28'·5N 24°14'·5E

### 4786 Nisís Souída

Fl.G.4·8s20m6M

245°-vis-120° Fl.4s marks Ancient

Mole 0·75M S

- 35°29'·3N 24°09'·2E

### NISÍS DHÍA

4813·3 Gouves Marina N mole

head

Fl.G.4s9m6M

- 35°20'·2N 25°17'·8E

### 4813·31 S mole head

Fl.R.4s9m6M

- 35°20'·2N 25°17'·8E

## Çanakkale Boğazi – Turkey

4852·6

Fl.G.3s6m9M

- 40°02'·6N 26°11'·5E

### 4857 Çanakkale Çimenlik Kalesi

Fl.RG.5s26m10M

027°-G-341°-R-027°

- 40°08'·9N 26°23'·9E

### ECEABAT

4866 Akbas Burnu

Fl(3)R.15s6m12M

- 40°13'·3N 26°25'·4E

### ILLGAR RIVER

4874 Kanarva Burnu Sütlüce

Fl(2)R.10s5m12M

- 40°21'·5N 26°37'·1E

## Marmara Denizi – Turkey

4880 Ince Burnu

Fl(3)10s32m16M

- 40°33'·45N 26°59'·80E

### ERDEK KÖRFEZİ

4885 Paşalimani Adasi

Fl.3s22m12M

- 40°27'·8N 27°40'·1E

### BANDIRMA KÖRFEZİ

4886 Fener Adasi NW point

Fl.5s43m10M

256°-vis-296°, 303°-vis-312°,

028°-vis-256°

- 40°27'·8N 28°04'·0E

### MARMARA ADASI

4892·8 Marmara Fishing shelter

main breakwater head

Fl.R.3s10m8M

- 40°35'·1N 27°33'·7E

### HAYDARPAŞA HAREM

4907 Ferry harbour S breakwater

head

Q(2)G.5s7m6M

41°00'·73N 29°00'·44E

4907·2 N breakwater head

VQ(2)R.5s7m6M

41°00'·88N 29°00'·61E

### FENERBAHÇE

4916·4 Aydinli Limani

Fl(2)G.5s8m5M

- 40°51'·1N 29°16'·3E

### HEYBELIADA

4917·4 S breakwater head

F.R.6m7M

- 40°52'·4N 29°06'·2E

4917·5 Boat harbour mole head

Fl.R.2s6m7M

- 40°52'·9N 29°06'·1E

### 4920 Hayirsizada

Fl.3s18m10M

- 40°47'·5N 29°15'·8E

4920·5 Tuzla Körfezi breakwater

head

Fl(2)6s12m8M

- 40°48'·8N 29°17'·6E

## Istanbul Boğazi – Turkey

4938 Kuruçeşme

Fl(3)G.15s7m10M

- 41°03'·4N 29°02'·2E

### 4950 Kireç Burnu

Fl(3)G.15s14m11M

- 41°08'·98N 29°02'·81E

### FETHİYE KÖRFEZİ

5840·5 Yacht harbour W

breakwater

Fl.G.5s5M

- 36°42'·0N 28°56'·4E

5840·51 E breakwater

Fl.R.5s5M

- 36°45'·0N 28°56'·5E

## Mediterranean – Turkey

### 5848·5 Geyikova Burnu

Fl.5s35m14M  
• 36°11'·9N 29°54'·9E

### FINIKE KÖRFEZİ

#### 5852 Yardımcı Burnu

Fl.R.5s36m8M  
• 36°12'·7N 30°24'·3E

### TAŞUCU KÖRFEZİ

#### 5871 Ağalar Limanı

Fl.3s23m8M  
• 36°16'·5N 33°50'·5E

### MERSİN LIMANI

#### 5872·4 Elbow Dir Lt 220°12'

DirFl.WR.5s10m5M  
219°-W-221·5°-R-219°

• 36°47'·1N 34°38'·1E

#### 5873·5 E jetty head

F.R.8M  
• 36°48'·0N 34°38'·9E

#### 5873·6 Karaduvar main breakwater head

F.R.8M  
• 36°48'·3N 34°41'·8E

#### 5873·7 Secondary breakwater head

F.G.8M  
• 36°48'·4N 34°41'·8E

#### 5874·4 Karatus Shelter main breakwater head

Fl.R.5s10m8M  
• 36°33'·5N 35°23'·1E

#### 5874·5 Secondary breakwater head

Fl.G.5s9m7M  
• 36°33'·6N 35°23'·0E

### 5875 Yumurталık

Fl(2)10s30m10M  
• 36°47'·7N 35°48'·0E

#### 5875·2 Shelter mole head

Fl.R.5s8m5M  
• 36°46'·1N 35°47'·8E

## Mediterranean – Cyprus

### LIMASSOL HARBOUR

#### 5880·2 W breakwater head

Fl.R.3s12m6M  
• 34°40'·15N 33°02'·54E

### FAMAGUSTA HARBOUR

#### 5900 Klidhes Islet

Fl(4)20s20m14M  
• 35°42'·6N 34°36'·4E

#### 5901 Alici Burnu fishing harbour

Fl(2)R.15s22m15M  
• 35°33'·70N 34°12'·59E

#### 5901·6 Kyrenia main light

Fl(3)R.20s18m20M  
• 35°20'·5N 33°19'·78E

## Mediterranean – Turkey

### ISKENDERUN KÖRFEZİ

#### 5914 Isdemir S mole

Fl.G.3s10m10M  
• 36°43'·5N 36°11'·1E

#### 5916 Iskenderun

Fl.10s45m20M  
Obscured 234°-shore  
• 36°32'·30N 36°03'·12E

## Mediterranean – Syria

#### 5920 Ra's Ibn Hani'

Fl.6s18m12M  
• 35°35'·2N 35°42'·9E

## Mediterranean – Lebanon

### BEIRUT

Note All harbour lights TE 2000

#### 5934 Räs Beyrouth

Fl(2)10s52m22M  
F and F.R lights on radio mast 0·6M

NE  
• 33°53'·8N 35°28'·3E

## Mediterranean – Israel

### ASHDOD PORT

Delete 5969·3 and 5969·75

## Mediterranean – Egypt

### DAMIETTA PORT

#### 6167 Khalig Abu Qir Idku LNG

Port detached breakwater NE end  
Q.G.11m5M

• 31°22'·49N 30°17'·67E

#### 6167·5 Ldg Lts 135°

Front F.R.12m6M  
Rear 200m from front

F.R.23m6M

• 31°22'·21N 30°18'·39E

### PORT OF ALEXANDRIA

#### 6180 Outer breakwater head Awad

Fl.R.3s20m10M

• 31°09'·9N 29°50'·7E

#### 6182 Quarantine breakwater head

El Shiro

Fl.G.3s20m10M

• 31°09'·9N 29°51'·0E

#### 6192 Sidi Kerir Ldg Lts 142°

Front 2F.R.9m5M

6192·1 Rear 250m from front

2F.R.13m5M

• 31°03'·34N 29°4'·36E

## Mediterranean – Libya

### MERSA TÒBRUCH

Note Navigation lights in Mersa

Tobruch reported TE 1996

### DARNAH

#### 6238 N mole head

Q.G.6s14m8M  
Loading jetty and power station lights

4M WNW

• 32°45'·8N 22°39'·7E

#### 6239 S mole head

Q.R.14m8M

• 32°45'·9N 22°39'·7E

### RA'S LANUF

#### 6266·4 East breakwater head

Q(2)R.10s18m5M

• 30°30'·48N 18°35'·40E

### MISURATA (QAŞR AHMAD)

#### 6278 Steel harbour Ldg Lts 262°20'

Front Q.Y.11m7M

Rear 430m from front Iso.Y.6s19m7M

• 32°20'·60N 15°14'·63E

#### 6278·4 N breakwater head

Oc.G.4s12m5M Horn 20s

• 32°20'·89N 15°15'·38E

### PORT OF ṬARABULUS

#### 6320 Mellitah jetty head

Fl.3s13M

• 32°53'·02N 12°14'·73E

### ZUWARAH

#### 6323 N mole head

VQ.G.11m8M

• 32°55'·38N 12°07'·57E

#### 6324 S mole head

VQ.R.11m8M

• 32°55'·29N 12°07'·34E

## Mediterranean – Tunisia

#### 6328·16 Dir Lt

DirIso.2s8m8M

• 33°28'·7N 11°07'·8E

### ÎLE JERBA

#### 6330·2 Aghir

Fl.4·5s7m9M 258°-vis-010°

Reserve light F.G

• 33°45'·2N 11°01'·2E

#### 6334·2 Fishing Port No.1

Fl.G.7s4m6M

• 33°59'·9N 10°51'·5E

#### 6334·4 No.2

Fl.R.5·5s4m6M

• 33°55'·9N 10°51'·6E

#### 6334·6 No.3

Fl.G.7s4m6M

• 33°54'·8N 10°51'·5E

#### 6334·8 No.4

Fl.R.5·5s4m6M

• 35°54'·8N 10°51'·5E

#### 6335 No.5

Fl.G.7s4m6M

• 33°53'·7N 10°51'·6E

#### 6335·2 No.6

Fl.R.5·5s4m76M

• 33°53'·7N 10°51'·5E

### SOUSSE

#### 6386·1 Yasmine Yacht Harbour

jetty

Fl(2)15s17m12M

• 36°22'·2N 10°32'·8E

#### 6386·3 W breakwater head

Fl(2)G.9s10m6M

• 36°22'·2N 10°38'·8E

#### 6386·5 E breakwater head

Fl.R.5s9m6M

• 36°22'·2N 10°32'·8E

### PORT DE KELIBIA

#### 6390·4 Jetée sud head

Fl(2)8s5m5M

• 36°50'·0N 11°06'·5E

#### 6392·6 El Haouaria fishing harbour

Fl.G.4s8m9M

• 37°02'·4N 11°03'·9E

#### 6392·62

Fl(2)R.5s8m9M

• 37°02'·4N 11°03'·9E

#### 6392·64

Fl.5s4m5M

• 37°02'·2N 11°03'·9E

#### 6392·62 Dir Lt

DirIso.2s7m6M

• 37°01'·1N 10°54'·4E

### LAC DE GHAR EL MALH

#### (PORTO FARINA)

#### 6416 Îles Cani

Fl(2)WR.10s39m19/16M

237°-W-177°-R-237°

• 37°21'·2N 10°07'·4E

### BIZERTE

#### 6426 Breakwater N head

Fl.G.15m8M

• 37°16'·6N 9°53'·4E

### ÎLE DE TABARKA

#### 6460 Jazirat Tabarka

Fl.2·5s72m17M

• 36°57'·8N 8°45'·5E

**ÎLE DE LA GALITE**  
Delete 6465

**Mediterranean – Algeria**

**SKIKDA**

6524 **Jetée du Château Vert head**

F.G.10m5M

109°-vis-011°

• 36°53'.4N 6°54'.3E

**BEJAÏA**

6569 **N side jetty head**

F.G.8m8M

• 36°45'.1N 5°05'.6E

6570 **Passe de la Kasbah S side**

F.R.8m8M

• 36°44'.8N 5°05'.3E

6570·2 **N side**

F.G.8m8M

• 36°44'.9N 5°05'.3E

**DELLYS**

6592 **Cap Bengut Pointe des**

**Jardins**

Fl(4)15s63m30M

079°-vis-287°

Obscured by Pointe de Dellys when bearing less than 270°

• 36°55'.4N 3°53'.6E

**PORT DE ZEMMOURI BAHAR**

6593·4 **NE pier head**

Q.16m10M

• 36°48'.3N 3°33'.58E

6596 **Temenfoust (Le Pérouse)**

**near head of jetty**

Iso.R.2s10m7M

Obscured by Cap Matifou when bearing more than 145°

• 36°48'.3N 3°13'.9E

**ALGIERS**

6602 **Port d'Alger Jetée Kheir**

**Eddine head**

Fl(2)3s23m20M Horn Mo(N)30s

154°-vis-055°

• 36°46'.7N 3°04'.8E

6604 **Spur**

Fl.G.4s10m11M

309°-vis-133°

• 36°46'.8N 3°04'.4E

6606 **Jetée du Vieux Port N end**

Fl.R.4s10m12M

059°-vis-014°

• 36°46'.7N 3°04'.4E

6610 **S entrance E breakwater head**

Oc.R.4s12m13M

005°-vis-312°

• 36°45'.8N 3°04'.7E

6611 **Jetée de Mustapha spur**

Iso.G.4s12m12M

295°-vis104°

• 36°45'.9N 3°04'.8E

6612 **Bassin de l'Agha S entrance**

**W side**

F.R.11m8M

065°-vis-319°

• 36°45'.9N 3°04'.2E

6613 **E side**

F.G.11m7M

285°-vis-160°

• 36°46'.0N 3°04'.3E

6616 **N entrance W side**

F.R.10m9M

145°-vis-025°

• 36°46'.3N 3°04'.4E

6617 **E side**

F.G.10m8M

340°-vis-196°

• 36°46'.3N 3°04'.1E

6629·5 **Port de Khemisti W jetty**

F.G.7m7M

• 36°38'.4N 2°40'.4E

**PORT CHERCHELL**

Delete 6644

**ORAN**

Delete 6684·2 and insert

6685·2 **Westwards**

Iso.R.2s8m6M

• 35°42'.8N 0°38'.1W

6694 **Mole Ibn Khaldoun eastwards**

Oc(4)R.12s9m7M

• 35°42'.7N 0°38'.7W

**Mediterranean – Morocco**

**PUERTO DE MELILLA**

6762 **NE breakwater centre of head**

Fl.G.4s32m7M

• 35°17'.33N 2°55'.38W

**PUERTO AL MARTÍL**

Delete 6790

The following reference numbers refer to Admiralty List of Lights and Fog Signals Volume D (NP 77)

**Morocco**

**TANGIER**

Delete 2510·2

**Archipélago dos Açores**

**ILHA DE SÃO MIGUEL**

2640·65 **N mole**

Oc.G.4s6m6M

• 37°44'.63N 25°14'.76W

2642·5 **Vila franco do Campo marina**

Fl.G.4s9M

• 37°42'.76N 25°25'.79W

2643 **W pier head**

Oc.R.5s7m5M

• 37°42'.77N 25°25'.89W

Delete 26434/2643·1

2656·9 **Rabo de Peixe Fishing port mole**

Fl.R.5s10m6M

• 37°48'.95N 25°35'.14W

2657 **Igreja do Bom Jesus**

Iso.WR.5s59m5M

090°-R-120°-W-175°-R-190°

• 37°48'.80N 25°34'.96W

2659·4 **Port Formoso**

Fl.R.4s6M

• 37°49'.28N 25°25'.62W

**ILHA DO FAIAL**

2693 **Marconi Alomoxarife Dir Lt**

224·5°

Dir Fl(2)R.5s6m9M (5M by day)

224'-vis-225°

• 38°33'.19N 28°36'.38W

**Arquipélago da Madeira**

**ILHA DA MADEIRA**

2746·7 **Lugar de Baixo**

Fl(3)R.8s9m6M

• 32°40'.50N 17°05'.35W

2748 **Calheta E pier head**

Fl.G.5s9m6M

• 32°42'.76N 17°10'.01W

2748·2 **W pier head**

Fl.R.5s9m6M

• 32°42'.78N 17°10'.05W

**ILHA DE PORTO SANTO**

2756 **Ilhéu de Cima**

Fl(3)15s123m21M Aeromarine

Reserve light range 17M

F.R on radio mast 2·8M NW

• 33°03'.2N 16°16'.5W

**Islas Canarias**

**ISLA LANZAROTE**

2781·5 **Marina Rubicon mole head**

Fl(4)G.15s3m5M

• 28°51'.3N 13°49'.0W

2781·55 **Elbow**

Fl(4)R.15s1m5M

• 28°51'.4N 13°49'.0W

**ISLA DE GRAN CANARIA**

Delete 2801·2 and insert

2800 **Muelle Leon y Castillo head S**

Fl(2)G.7s5M

• 28°07'.55N 15°24'.8W

2801·2 **Muelle Leon y Castillo head W**

Fl(2)G.12s19m7M

• 28°07'.7N 15°25'.1W

**ISLA DE TENERIFE**

2822·8 **Head**

Fl(2)G.7s12m9M

• 28°29'.0N 16°13'.7W

Delete 2822·8 and 2826·6

2826·72 **E side**

Fl(3)G.9s12m9M

• 28°27'.3N 16°14'.4W

2826·82 **Contradique head**

Fl(3)R.10s7m9M

• 28°27'.2N 16°14'.8W

2831 **Puerto de los Cristianos mole head**

Fl.R.5s12m5M

• 28°02'.8N 16°43'.0W

**ISLA HIERRO**

2838 **Puerto de Hierro or de la**

**Estaca pier head**

Fl.G.5s13m5M

• 27°46'.8N 17°54'.01W

**ISLA GOMERA**

2845·2 **Inner breakwater head**

Fl(2)G.7s5M

• 28°01'.5N 17°11'.8W

## 7.2 British Admiralty charts

Page 115

### Index E

Renumber chart 92 to read 91 and amend scale to 350,000

Insert:

1515	Plans on the East coast of Spain	
	Denia	15,000
	Garrucha	7,500
	Aguilas and El Hornillo	12,500
	Sant Carles de la Rapita and	
	Alcanar	25,000
	Carboneras	15,000

Delete charts 1458 and 1588.

### Index E1

Insert:

211	Plans in the Maltese islands	25,000
-----	------------------------------	--------

Delete chart 2623.

Page 117

### Index F

Insert:

240	Approaches to Port Said	25,000
241	Outer approaches to Port Said	50,000

Delete chart 234.

## 7.2 Spanish chart

Page 122

Delete charts 970, 4213 and 4214.

Insert:

59	Del cabo de San Sebastián a Fos-Sur-Mer	250,000
68	Archipielago de Madeira	350,000
83B	De Es-Suira (Mogador) a Agadir	160,000
4216	Freu de Dragonera y puerto de Andratx	15,000
6030	Puertos de Gran Tarajal y del Rosario	5,000
6110	Puertos de Mogán, Arguineguin y Muelle Cementero	
	Puerto de Mogán	7,500
	Puerto de Arguineguin y Muelle Cementero	7,500

## 7.4 French (SHOM) charts

Page 124

Delete charts 6863 and 6881.

Insert:

7441	Abords et ports de Monaco - Du Cap d'Ail au Cap Martin	7,500
7442	De Villefranche-sur-Mer à Menton	20,000
7443	Du Cap Ferrat à Capo San Lorenzo	49,600

## 7.5 Italian charts

Page 127

Delete charts 909/18 and 911/05.

## 9. TIDES NEW FOR 2006 See pages 17-18

## 10. HARBOUR INFORMATION

\* Denotes a new entry.

Page 151

### 10.1 GIBRALTAR SHEPPARD'S MARINA

Start dates for the project have been delayed until 2006/07.

**Data** (for the finished marina) c.100 berths. Depths 2.5–4.5m. Max draught 2.5–3m. Max LOA 20–25m.

The pontoon layout has changed from the original proposal, and will be shown in the new edition of *Mediterranean Almanac 2007-08*.

Sheppard's Chandlers remains open in the original building.

The old Sheppard's Marina is being run by a temporary berthing company, and is in the process of moving berth-holders to make way for the new apartment associated marina, due to open around 2007.

Page 152

### QUEENSWAY QUAY MARINA

Work is well under way on the proposed modifications to the marina entrance. By July 2005 the new 'island' which now forms the W side of the marina, had broken the surface, and the new entrance had been formed. (See photo below.) The marina management strongly advise calling ahead on VHF Ch 71 (callsign *Queensway Quay Marina*) to obtain the latest navigation advice for entering the marina. Cardinal buoys are being used to aid navigation in the vicinity.



## 10.2 SPAIN

Page 157

### BENALMADENA

Harbour Authority ☎ 952 577 022

Page 158

### MALAGA

Add at end:

Real Club Mediterraneo de Malaga  
cbotes@realclubmediterraneo.com  
www.realclubmediterraneo.com



Page 159

## ALMERIA

Entrance silting – use leading lines to avoid shallows.

## GARRUCHA

VHF Ch 09

Page 160

## CARTAGENA

Add:

### \* Yacht port Cartagena

New superyacht marina lying immediately E of the Real Club de Regatas Marina, along Muelle de Alfonso XII.

**Data** 55 berths. LOA 25–120m.

Depths 7–10m. Assisted mooring.

**Facilities** Water. 220/380V. High-speed internet. Sat TV. Vacuum pump-out. Fuel: direct line/tanker delivery. Heliport. At berth private parking. Yacht club.

### \*Izar Carenas Shipyard

5500-ton (150x23x9m) syncro-lift. Specialising in conversion and repair of large luxury yachts.

Yacht Port Cartagena, Muralla del Mar, 14 Bajos – 30202 Cartagena, Murcia.

☎ 968 121 213 F 968 121 232

www.yachtportcartagena.com

Page 163

## MARINA GREENWICH

Charge band 4.

Page 167/8

## PALMA

Pier 46 and jetty to N now operate as a marina. Laid moorings tailed to the quay.

Page 170

## PUERTO DE ANDRATX

⊕ 39°32'·53N 02°22'·75E WGS84

Area on NW side inside outer breakwater is full with local moorings. Anchoring possible on S side or in the NE of the harbour. Care needed of uneven depths.

### Data

Club de Vela

Fuel quay VHF Ch 09 (0800-2000)

CdV email [cvpa@sertebal.com](mailto:cvpa@sertebal.com)

Andratx Port Authority

Pontoon and inside breakwater quay. Some laid moorings.

## SOLLER

Leading lights obscured by trees.

Berths available along the town quay.

Charge band 2.

## POLLENSA

Charge band 3.

Good anchorage in the bay.

Page 174/75

## MAHON

Ribera del Puerto

All moorings/berths charge band 3/4.

Page 184

## GINESTA

Reports of silting in the entrance and

inside the marina. Call ahead for latest advice before approaching.

## BADALONA

Marina opened June 2005.

**Data** Water. 220V. All other facilities under construction.

### \* PORT FORUM

New harbour reported under construction very close to Badalona Marina.

## 10.3 FRANCE

Page 205

After port de Porquerolles insert:

### ILE DE PORT CROS

Parc National

Access, navigation, anchoring and fishing restrictions.

www.portcrosparcnational.fr

Page 209

### PORT DE CANNES

New arrivals quay at the head of the E breakwater. Two more new pontoons along SW quay.

☎ 0492 98 70 20

Page 214

## CALVI

**Plan** There are breakwaters for the fishing harbour (N of yacht harbour) which have been omitted on the plan.

Page 217

## BASTIA

Add: VHF Ch 09 for harbourmaster  
vieuxport-bastia@wanadoo.fr

## 10.4 ITALY

Page 224

### VARAZZE

Harbour undergoing major works.

Unclear when (or if) it will re-open to yachts.

Page 226

### CHIAVARI

Add:

Mooring 24hrs free on outer mole.

Page 227

### PORTOVENERE

Depths now reported 2m.

Page 229

### PORTO AZZURO

Almost all berths now have laid moorings. Pontoons on W side reported to be charge band 2/3. Many moorings with floating lines in Cala di Mola. SSW swell penetrates. Better off the commercial quay.

Yacht yard on commercial quay.

Hauling facilities.

☎ 0565 968692

Page 230

### VIAREGGIO

A sand bar extends for at least 800m NNE from the end of the breakwater. Approach should be made on a course due E towards a conspicuous hotel on the shore. When the light Iso.R.3s9m7M bears 220°T turn towards the entrance, keeping close to

the port side when entering.

Page 240

## PROCIDA MARINA

**Shelter** Porto Turistico uncomfortable with W swell.

**Facilities** Water. 220V. Showers and toilets. Laid moorings. Fuel quay reported. Charge band 5.

Page 243

## PORTO TORRES

Hauling and storage ashore in La Darsena.

Lorenzo Navoli ☎ 079 512066

lorenzonavoli@tiscalinet.it

Page 244

## SANTA TERESA DI GALLURA

Charge band 4/5.

Page 245

## CANNIGIONE

Charge band 5.

Page 249

## SANTA MARIA NAVARRESE

Add at end:

Porto Turistico ☎/F 0782 615522

portosantamaria@tiscalinet.it

## MARINA DI ARBATAX

**Data** 400 berths. 150 visitors berths.

Max LOA 60m. Depths 8–15m

marinadiarbatax@tiscali.it

## VILLASIMIUS

Breakwater extension complete and covers reef. Charge band 4.

Page 249/250

## CAGLIARI

Inner harbour quay closed for repairs 2005.

### Marina di Sant'Elmo

VHF Ch 74

3 new pontoons 2005.

**Data** 200 berths Water. 220V.

Page 251

## CARLOFORTE

Anchoring reported prohibited 2005. Berth stern or bows-to the public quay on W side of the harbour. No service.

Page 252

## PORTO TURISTICO TORRE GRANDE

**Note** Poorly lit fish farm in S approaches.

Page 253

## FERTILIA

Add:

### Base Nautica Usai

Gardiennage for yachts left here.

Good service reported.

Cesare Usai ☎ 0799 30233 F 0799 30088

basenauticausai@tiscalinet.it

## SICILY

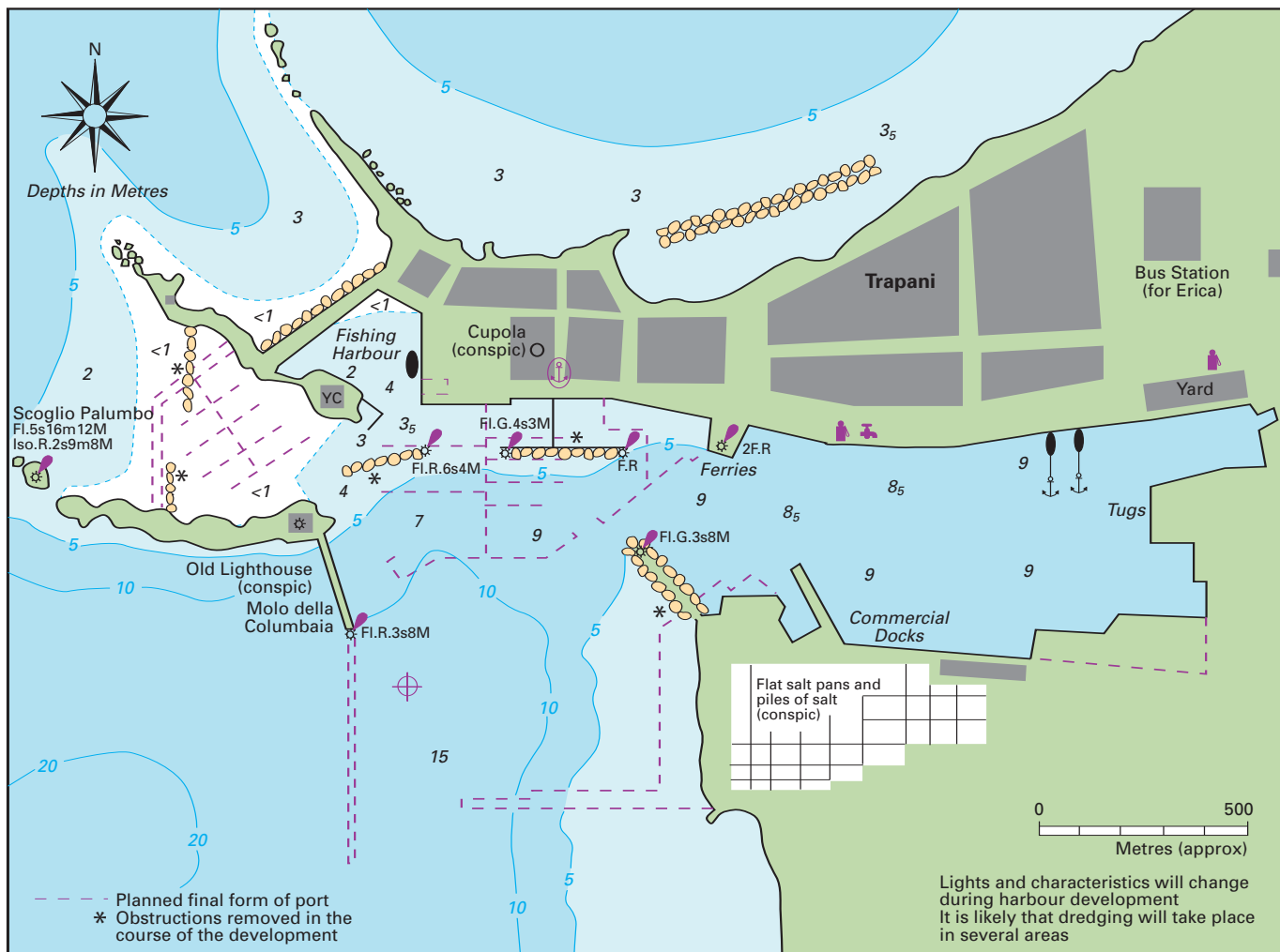
Add:

### Riserva Naturale dell Zingaro

New nature reserve W of Capo San Vito.

## CAPO SAN VITO

Anchoring reported prohibited E of



**TRAPANI**  
 Ⓧ 38°00'·4N 12°30'·0E

harbour, but permitted N of the breakwater.

Page 254

**MARINA VILLA IGEIA**

Charge band 5. Extremely expensive, especially for multihulls. Shower and toilet facilities reported to be poorly maintained.

**PALERMO**

Yacht berths at the head of the Cala. Laid moorings tailed to the quay on S mole. Water. 220V. Very little room for visiting yachts anywhere in Palermo. Charge band 3.

Page 255

**CEFALU**

S pier has been removed. Care needed of possible underwater debris in the vicinity.

**TINDARI**

**Riserva Naturale Laghetti di Marinello**

New nature reserve on the E side of the cape.

**MARINA DEL NETTUNA – MILAZZO**

**Data** 140 berths. Max LOA 35m. Depths 6–8m. Charge band 4.

**Facilities** Travel-lift.

☎ 090 922 2809

marinadelnettuno@blamar.191.it  
 www.marinadelnettuno.com/milazzo.html

Page 256

**MARINA LUNGA**

Add:

New pontoons have been installed.

**Data** Water. 220V. Max LOA 24m.

Pontoon ‘Portosalvo’

**Data** 40 berths. Max Loa 50m.

Depths 4–5m.

Contact Filippo Saglimbeni  
 Portosalvo di Filippo Saglimbeni, Via Quattropani 46, 98050 Pianoconte

☎ 0368 719 0843

ormeggiolipari@katamail.com

**PIGNATARO**

New pontoons have been installed.

**Data** Water. 220V.

Page 257

**SACCNE FUEL PONTOON**

Since poor reports in 2003, very helpful service has been reported from visitors in 2004/5.

Diesel, petrol and water available on the quay. Open 0700–late. Depths 3–4m. Supermarket nearby.

**MARINA DEL NETTUNO – MESSINA**

☎ 090 340 335 F 090 572 9588

marinadelnettuno@blamar.191.it  
 www.marinadelnettuno/messina.html

**GIARDINI NAXOS**

Three pontoons installed along E quay.

**Data** Add: Water. 220V. Max LOA 20m.

Page 259

**SIRACUSA**

Grand Harbour quay

**Data** Add: Laid moorings. Water. 220V.

Page 261

**TRAPANI**

Ongoing harbour works. Hosting Americas Cup Louis Vuitton Acts 8&9 in Sept–Oct 2005.

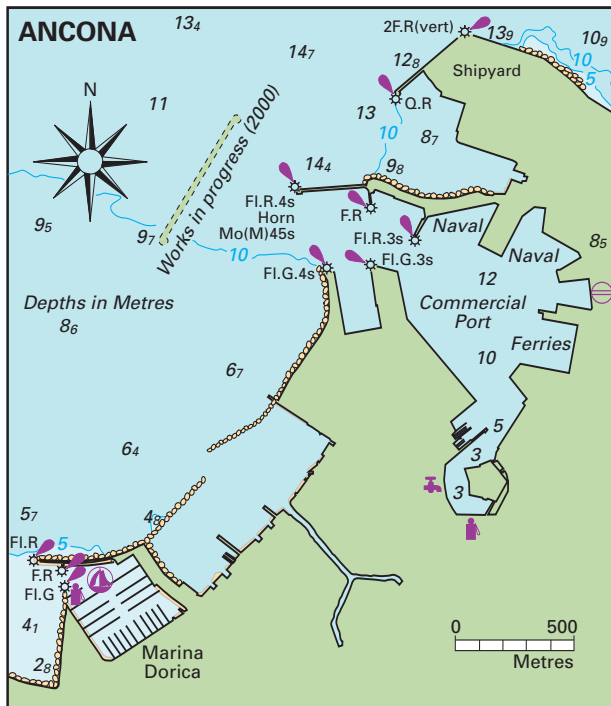
www.comune.trapani/trapaniinvela/atti/parco.shtml

www.portotrapani.it

Page 262

**CAPO SPARTIVENTO**

Off-lying fish/mussel farm dangerous to navigation 1M off the coast close E of Capo Spartivento. Corners marked



with yellow special marks, but no lights.

Page 270  
**ANCONA – MARINA DORICA**  
 See new plan.

Page 274  
**VENICE**  
[www.comune.venezia.it](http://www.comune.venezia.it)  
[www.port.venice.it](http://www.port.venice.it)

Page 278  
**\*MARINA TENUTA PRIMERA**  
 New marina with associated leisure park, including golf course, holiday accommodation and restaurants. 250 berths. Max LOA 20m. 140 places ashore. All facilities. 70-ton travel-lift. Repairs.  
 ☎ 0431 896880 Fax 0431 896881  
[marina@tenuta-primero.com](mailto:marina@tenuta-primero.com)  
[www.tenuta-primero.com](http://www.tenuta-primero.com)

**10.5 MALTA**  
 Page 282  
**PORTO MASO**  
 Ⓢ 35°55'·26N 14°29'·69E WGS84

**10.7 CROATIA**  
 \* Denotes a new entry.

Page 287  
**MARINA VALALTA**  
 Charge band 3.  
 ☎ 052 811 033 F 052 821 004  
[www.valalta.hr/hr/marina.htm](http://www.valalta.hr/hr/marina.htm)

Page 288  
**MARINA VERUDA**  
 New  
**Data** Max LOA 40m. 220/380V. Fuel quay (depth 2·5m). 30-ton crane.  
[marina-veruda@pu.tel.hr](mailto:marina-veruda@pu.tel.hr)  
[www.marveruda.com](http://www.marveruda.com)

Page 292  
 Insert:  
**\* MARINA BRODOGRADILISTE CRES**

Ship-builder and yacht hauling facility at Cres town.  
**Data** 50 berths. Max LOA 100m. 100 places ashore.  
**Facilities** Water. 220/380V. Showers and WC. 1000-ton lift capacity floating dock (100x11m). 100-ton travel-lift (33x7·5m) with max draught 2·7m. 25-ton crane. Repair workshops. Chandler. Restaurants, hotel and provisions in Cres town. Also Bank, ATM, P.O.  
 Marina Brodogradiliste Cres, Peskera 2, 51557 Cres.  
 ☎/F 051 571 544  
[www.brodogradiliste-cres.hr](http://www.brodogradiliste-cres.hr)  
[bc.marina@ri.htnet.hr](mailto:bc.marina@ri.htnet.hr)

Page 295  
**MARINA IZ (VELI IZ, MARINA BENJAMIN)**  
 Amend email and url to:  
[tankerkomerc@tankerkomerc.hr](mailto:tankerkomerc@tankerkomerc.hr)  
[www.tankerkomerc.hr](http://www.tankerkomerc.hr)

Page 299  
**MARINA TRIBUNJ**  
**Data** c.260 berths. 150 places ashore. Charge band 4.  
**Facilities** Water. 220V. WC and showers. Launderette. 80-ton travel-lift.  
 ☎ 022 447 140/145 F 022 447 141/148  
[marina-office@marina-tribunj.hr](mailto:marina-office@marina-tribunj.hr)  
[www.marina-tribunj.hr](http://www.marina-tribunj.hr)

Page 301  
**MARINA KASTELA**  
 Marina development complete, with all services available.

Page 302

Insert:  
**\* MARINA VLASKA**  
 New marina in the N of Milna Bay, Otok Brac. The marina is 1km from Milna.  
 VHF Ch 67  
**Data** 3 pontoons – 90 berths. Charge band 3.  
 ☎/F 021 636 247  
[info@marinavlaska.com](mailto:info@marinavlaska.com)  
[www.marinavlaska.com](http://www.marinavlaska.com)

## 10.11 GREECE

Page 313

**LIMIN KERKIRA**  
 Officials for clearance procedures are not always available. Gouvia Marina reported to be helpful and will find out if officials are available if you call ahead on VHF. Officials are based in Gouvia Marina for clearance procedures.

Page 315

**VONITSA**  
 Works on the new quay are complete. Depths along the quay 2–3m.

Page 319

**MITIKAS**  
 New harbour badly damaged with much of the outer breakwaters not visible, but lying just under the surface. Approach with caution.

Page 323

**MISSALONGHI**  
 New pontoons in place 2005. No facilities yet.

**PATRAS**  
 Patras Traffic VTS VHF Ch 13.  
**Nautilus Yachting**  
 New contact details:  
 VHF Ch 13  
 All clearance paperwork and can arrange pre-payment for Corinth Canal dues.  
 Office ☎ 22610 620061 F 22610 620031  
 GSM 6944 334977 (24hr)  
[ny@nautilusyachting.gr](mailto:ny@nautilusyachting.gr)

Page 324

**Rion-Antirion Bridge**  
 Maximum air-height 45m.

**TRIZONIA**  
 Berth stern or bows-to either side of the breakwater, taking care of underwater ballast off the quay in places.

Page 325

**CORINTH HARBOUR**  
 SW pier silted to 1·2m. New pontoons for local boats. Very crowded, little room for visitors. Max LOA 12m.

**CORINTH CANAL**  
 Use the website to calculate the exact transit costs, and to make a reservation for your transit. [www.corinthcanal.gr](http://www.corinthcanal.gr)

Page 326

### **FLISVOS MARINA (Faliron)**

Improvements planned to increase number of berths to 300 including a number of superyacht berths. Scheduled for completion during the first half of 2005.

☎ 210 987 1000 F 210 988 7354/210 987 1060

www.flisvosmarina.com  
info@flisvosmarina.com

Page 329

### **ERMIONI**

Works in progress extending the hammerhead pier to the ESE and widening the quay in the N harbour.

Page 331

### **LEONIDHION**

Fuel by mini-tanker.

Page 336

### **VLIKHADA (Thira)**

The W end of the S reef is now marked with a small yellow buoy (Fl.G). The end of the outer breakwater is marked with a red light (Fl.R). The inner entrance is lit Fl.G.

Latest advice suggests keeping close to the starboard side of the entrance channel once inside the breakwater (also keeping clear of the underwater rock). The port side of the channel appears to have silted to depths <2m. The Atlantis barge café in the SE corner of the harbour is also a submarine trip boat base. The submarine dive area lies approximately ½M SSW of the entrance, and is marked with six small yellow buoys; not to be confused with the one marking the reef.

## **10.12 TURKEY**

Page 357

### **PENDIK**

New breakwater and harbour construction off the town in the N of the bay. Large car ferry uses ramp in NE corner. Local moorings in NW corner. Ships stern-to under new breakwater. Anchor where convenient or berth stern-to with a long line ashore.

Page 357/8

### **ATAKOY MARINA**

**Facilities** Water. 220/380V. Wi-Fi. DD Tel. Sat TV. Showers & toilets. Fuel quay. 70-ton travel-lift. Larger yachts slipped locally. Most yacht repairs. Provisions. Restaurant.

### **SETUR KALAMIS MARINA**

Limited shower and toilet facilities reported 2005.

## **THE BOSPHORUS**

### **New Rail Tunnel Construction**

A new rail tunnel is under construction, running under the Bosphorus between Uskudar and Saray Burnu. Navigation is severely

restricted in the vicinity, with port and starboard hand buoys indicating the useable ship channel. Drilling and dredging works are in progress inside marked working areas (inside the buoys). It appears that local ferries and small craft are permitted within these areas, as long as a wide berth is given to the operational platforms and working vessels. All local traffic including pleasure craft MUST monitor the VTS on VHF Ch13/14. Yachts are advised to use the European side when travelling up or down the Bosphorus, the de facto pleasure craft northbound lane, where in places you may find a north-flowing counter current.

Page 359

### **CANDARLI**

⊕ 38°55'44N 26°56'34E WGS84

### **YENIFOCA**

⊕ 38°44'50N 26°50'32E WGS84

### **ESKIFOCA**

⊕ 38°40'19N 26°44'89E WGS84

Visitors berths S of the trawler berths under the castle in Buyukdeniz Limani. No laid moorings here. Fuel quay reported not operating 2005.

### **LEVENT MARINA**

⊕ 38°24'39N 27°04'14E WGS84

info@leventmarina.com.tr

Page 360

### **MORDOGAN**

⊕ 38°30'69N 26°38'02E WGS84

New harbour. Main structure complete. Berth alongside where convenient. No facilities.

### **SETUR ÇEŞME MARINA**

60-ton slipway. No travel-lift at the marina.

### **ALICATI MARINA**

⊕ 38°15'23N 26°23'22E WGS84

Works in progress in development ashore.

**Berths** Stern or bows-to where directed. Laid moorings being installed 2005. Depths 3–4m inside. Prone to silting.

**Facilities** Water. 220V. 100-ton travel-lift.

Page 361

### **SIGAÇIK MARINA**

Pontoon layout different to that shown in the plan. pontoons equally spaced down the E quay, in NW-SE orientation. Yachts berth alongside on the pontoons or stern or bows-to where convenient. Only two N pontoons in commission 2005.

### **ALTINKUM**

Marina planned in the medium term.

### **GÜLLÜK**

Add: Lale Yachting  
Jetty with laid moorings. Water. 220V.  
☎ 0252 522 3082 F 0252 522 299  
laleyacht@superonline.com

## **TORBA**

⊕ 37°05'3N 27°27'15E

Page 362

### **MILTA BODRUM MARINA**

VHF Ch 73 (24/7) Callsign *Milta Bodrum Marina*

Call ahead for a berth.

**Data** 450 berths. 50 places ashore. Max LOA 75m. Depths 2–6m.

### **COKERTME**

Various private jetties:

*Kaptan Jetty & Restaurant*

Laid moorings. Water. 220V. Fuel. WC & shower. Mini-market. Restaurant.

☎ 0252 521 0012 F 0252 531 0105

*Rose Mary Pirate Yachting*

Laid moorings. Water. 220V. Fuel. Mini-market. Bar restaurant.

☎ 0252 531 0158/9 F 0252 531 0098

www.rmpirate.8m.com

mahirvurmaz@superonline.com

Page 363

### **SÖĞÜT**

Additional berths available on jetties off the village.

### **MARTI MARINA**

Outer wave-breaker pontoon in place. Excellent all-round shelter.

Page 364

### **MARMARIS MARINA**

Now owned by Setur Marinas.

Page 365

### **KARAAGAC LIMANI**

Military Zone – entry prohibited. Haul-out facility reported under development within the military area. Yachts must book in advance. All unauthorised entry is prohibited.

### **DALYAN**

Marina planned in the medium-term.

### **GÖÇEK**

*Skoepa Marina*

☎ 0252 645 1786 F 0252 645 1789

eggyachting@eggyachting.com

*Club Marina*

VHF Ch 72 Callsign *TAL207 Club Marina*

Max LOA 80m.

☎ 0252 645 1800 F 0252 645 1804

Page 367

## **ANTALYA**

Add:

### **Adoport Free Zone**

Tax-free haul-out area. 400 places ashore. 60-ton travel-lift. Winter maintenance and repairs.

☎ 0242 259 2139 F 0242 259 2102

info@adoport.com

www.adoport.com

## **10.17 EGYPT**

Page 380

### **\*PORTO MARINA**

A new Camper & Nicholson Marina under development on the Mediterranean coast of Egypt. Open in July 2005.

Data (when complete) 1000 berths. Max LOA 100m.



mail@cnmarinas.com  
www.cnmarinas.com

## 10.21 MOROCCO

Page 393

### SAIDIA

www.fadesa.ma

Page 394

### MELILLA MARINA

Charge band 2.

### AL HOCEÏMA

Harbour works complete. Berths outside customs building for impounded vessels only. The N side of the new harbour is for ferries only. Yachts may use the S quay, but mooring bollards are few and far between.

Page 395

### EL JEBHA

Harbour full. Yachts go alongside fisheries protection vessel.

### CEUTA

Rigid adherence to new Spanish regulations regarding light dues and midnight-midnight rates mean charges have escalated. Charge band 3/4.

Page 397

### ASILAH

Care needed of sandbanks in the approaches. Depths change after Atlantic storms.

## 10.22 ATLANTIC ISLANDS

Page 398

### HORTA

⊕ 38°32'·10N 28°37'·14W WGS84

VHF Ch 10, 16 Horta Marina

**Berths** Report to the reception quay for a berth. Friendly and efficient check-in procedure. Yachts up to 12m are directed to the N basin, on finger pontoons or rafted alongside the wall. 10–19m yachts raft alongside the wall. Larger yachts tend to be directed to the S basin. Very large yachts >25m go stern-to or alongside the outer breakwater. Yachts awaiting berths anchor off the S basin, but are usually offered a berth within 36 hours.

**Shelter** Good shelter inside the N harbour. At times there can be a surge on the arrivals quay which can cause damage. There is also some surge in the S basin. In May, June and July Horta is over-flowing and yachts are often 4–5 deep on the arrivals quay and along the N basin wall.

**Facilities** Water & 220V boxes along N basin wall and at marina berths. Showers & toilets. Self-service laundry in marina. Full service laundry services in the town.

Mid Atlantic Yacht Services

☎ 292 391 616 F 292 391 656

Page 400

### PONTA DELGADA

⊕ 37°44'·20N 25°39'·09W WGS84

Work in harbour due to begin Autumn 2005, with completion due within 2–3 years.

**Berths** Go alongside fuel quay for clearance procedures and allocated a berth. There is some surge on the quay here. Finger pontoons or stern-to. Not all berths have laid moorings. www.apsm.pt/marina  
marinapdl@apsm.pt

### ACKNOWLEDGEMENTS

The editors would like to thank everyone who contributed information included in this supplement. We are happy to receive further information care of the publishers.

Rod Heikell and Lucinda Michell

**GIBRALTAR**  
LAT 36°08'N  
LONG 5°21'W

**TIMES AND HEIGHTS OF HIGH AND LOW WATER**  
(Heights in Metres)

**TIME ZONE**  
-0100  
**Subtract 1 hour for UT.**  
**Summer Time**  
(area enclosed in shaded box)  
**add 1 hour**

**2006**

JANUARY			FEBRUARY			MARCH			APRIL			MAY			JUNE		
Time	m	Time	Time	m	Time	Time	m	Time	Time	m	Time	Time	m	Time	Time	m	Time
1	0346	1	0507	1	0406	1	0503	1	0503	1	0521	1	0635	1	0635	1	0621
	0921		1049		0951		1047		1047		1101		1210		1210		1207
	1607		1731		1630		1717		1659		1757		1815		1815		1854
	2154		2311		2212		2319		2226		2315		2249		2249		2249
2	0433	2	0551	2	0447	2	0529	2	0508	2	0606	2	0717	2	0717	2	0717
	1008		1134		1032		1111		1015		1141		1212		1212		1212
	1654		1817		1713		1809		1650		1847		1912		1912		1912
	2239		2362		2249		2319		2225		2359		2336		2336		2336
3	0519	3	0637	3	0529	3	0629	3	0549	3	0658	3	0807	3	0807	3	0807
	1057		1210		1112		1204		1043		1228		1313		1313		1313
	1743		1906		1756		1820		1743		1942		2018		2018		2018
	2325		2347		2326		2347		2321		2402		2338		2338		2338
4	0607	4	0727	4	0612	4	0716	4	0630	4	0756	4	0905	4	0905	4	0905
	1149		1284		1152		1284		1113		1303		1402		1402		1402
	1833		1958		1842		1907		1755		2003		2102		2102		2102
	2351		2351		2319		2319		2319		2403		2307		2307		2307
5	0014	5	0127	5	0005	5	0109	5	0605	5	0716	5	0821	5	0821	5	0821
	0659		0716		0657		0716		0605		0716		0821		0821		0821
	1246		1410		1235		1410		1136		1303		1402		1402		1402
	1927		2056		1931		2056		1836		2003		2102		2102		2102
6	0110	6	0231	6	0049	6	0149	6	0648	6	0759	6	0910	6	0910	6	0910
	0756		0924		0748		0813		0748		0827		0916		0916		0916
	1348		1531		1326		1503		1227		1314		1403		1403		1403
	2026		2210		2027		2210		2033		2102		2201		2201		2201
7	0212	7	0406	7	0147	7	0244	7	0336	7	0427	7	0518	7	0518	7	0518
	0856		1043		0850		1043		0745		0834		0923		0923		0923
	1456		1634		1447		1634		1334		1423		1512		1512		1512
	2131		2344		2139		2344		2033		2122		2211		2211		2211
8	0322	8	0545	8	0333	8	0435	8	0154	8	0245	8	0336	8	0336	8	0336
	0802		0903		0803		0903		0803		0903		1002		1002		1002
	1612		1835		1615		1835		1549		1715		1804		1804		1804
	2246		2333		2325		2333		2158		2245		2334		2334		2334
9	0441	9	0100	9	0540	9	0602	9	0427	9	0518	9	0609	9	0609	9	0609
	1112		0644		0713		0713		0642		0713		0802		0802		0802
	1731		1311		1728		1824		1309		1408		1507		1507		1507
	2253		1921		1921		1904		1309		1408		1507		1507		1507
10	0000	10	0154	10	0048	10	0148	10	0551	10	0642	10	0733	10	0733	10	0733
	0550		0727		0555		0727		0427		0518		0607		0607		0607
	1216		1359		1216		1359		1102		1201		1290		1290		1290
	1832		1958		1832		1904		1102		1201		1290		1290		1290
11	0102	11	0235	11	0136	11	0236	11	0641	11	0732	11	0823	11	0823	11	0823
	0644		0804		0642		0804		0540		0630		0720		0720		0720
	1311		1440		1346		1414		1245		1334		1423		1423		1423
	1920		2032		1937		2011		1309		1408		1507		1507		1507
12	0154	12	0309	12	0212	12	0312	12	0732	12	0823	12	0914	12	0914	12	0914
	0729		0839		0746		0826		0642		0733		0824		0824		0824
	1359		1516		1331		1501		1245		1334		1424		1424		1424
	2001		2103		2007		2053		1309		1408		1507		1507		1507
13	0238	13	0340	13	0243	13	0343	13	0809	13	0900	13	0991	13	0991	13	0991
	0809		0912		0817		0912		0733		0824		0915		0915		0915
	1444		1548		1442		1548		1346		1445		1534		1534		1534
	2040		2133		2036		2133		1309		1408		1507		1507		1507
14	0319	14	0408	14	0311	14	0409	14	0809	14	0900	14	0991	14	0991	14	0991
	0848		0944		0848		0944		0733		0824		0915		0915		0915
	1525		1619		1523		1619		1442		1534		1623		1623		1623
	2115		2201		2105		2105		1309		1408		1507		1507		1507
15	0355	15	0435	15	0338	15	0435	15	0841	15	0932	15	1023	15	1023	15	1023
	0925		1014		0931		1014		0848		0939		1024		1024		1024
	1603		1600		1608		1600		1548		1648		1711		1711		1711
	2149		2228		2149		2228		1648		1711		1800		1800		1800
16	0423	16	0423	16	0423	16	0423	16	0842	16	0933	16	1024	16	1024	16	1024
	1005		1005		1005		1005		0931		1024		1115		1115		1115
	1646		1646		1646		1646		1024		1115		1206		1206		1206
	2230		2230		2230		2230		1024		1115		1206		1206		1206

**GIBRALTAR**  
LAT 36°08'N  
LONG 5°21'W

**TIMES AND  
HEIGHTS OF  
HIGH AND  
LOW WATER**  
(Heights in  
Metres)

**TIME ZONE**  
-0100  
**Subtract 1  
hour for UT.**  
**Summer Time**  
(area enclosed  
in shaded box)  
**add 1 hour**

**2006**

JULY			AUGUST			SEPTEMBER			OCTOBER			NOVEMBER			DECEMBER			
Time	m	Time	m	Time	m	Time	m	Time	m	Time	m	Time	m	Time	m	Time	m	
1	0648	0.1	0039	0.2	0128	0.3	0125	0.4	0426	0.4	0031	0.4	0514	0.3	0528	0.2	0546	0.3
2	0731	0.7	0720	0.7	0825	0.8	0827	0.7	1051	0.7	0921	0.7	1134	0.9	1155	0.9	1210	0.8
3	0854	0.9	0809	0.7	0935	0.8	0947	0.7	1218	0.8	1051	0.7	1334	0.9	1419	0.9	1457	0.9
4	1003	0.9	1000	0.7	1107	0.7	1121	0.7	1418	0.8	1308	0.8	1559	0.9	1656	0.9	1719	0.9
5	1118	0.7	1146	0.7	1232	0.8	1231	0.8	1513	0.8	1408	0.8	1704	0.9	1803	0.9	1841	0.9
6	1231	0.8	1250	0.8	1338	0.8	1328	0.8	1603	0.8	1503	0.8	1803	0.9	1903	0.9	1931	0.9
7	1358	0.8	1428	0.8	1503	0.8	1445	0.8	1718	0.8	1603	0.8	1903	0.9	2003	0.9	2046	0.9
8	1503	0.8	1505	0.9	1603	0.8	1503	0.8	1803	0.8	1703	0.8	2003	0.9	2103	0.9	2143	0.9
9	1603	0.8	1603	0.8	1703	0.8	1603	0.8	1903	0.8	1803	0.8	2103	0.9	2203	0.9	2243	0.9
10	1703	0.8	1703	0.8	1803	0.8	1703	0.8	2003	0.8	1903	0.8	2203	0.9	2303	0.9	2343	0.9
11	1803	0.8	1803	0.8	1903	0.8	1803	0.8	2103	0.8	2003	0.8	2303	0.9	2403	0.9	2443	0.9
12	1903	0.8	1903	0.8	2003	0.8	1903	0.8	2203	0.8	2103	0.8	2403	0.9	2503	0.9	2543	0.9
13	2003	0.8	2003	0.8	2103	0.8	2003	0.8	2303	0.8	2203	0.8	2503	0.9	2603	0.9	2643	0.9
14	2103	0.8	2103	0.8	2203	0.8	2103	0.8	2403	0.8	2303	0.8	2603	0.9	2703	0.9	2743	0.9
15	2203	0.8	2203	0.8	2303	0.8	2203	0.8	2503	0.8	2403	0.8	2703	0.9	2803	0.9	2843	0.9
16	2303	0.8	2303	0.8	2403	0.8	2303	0.8	2603	0.8	2503	0.8	2803	0.9	2903	0.9	2943	0.9
17	2403	0.8	2403	0.8	2503	0.8	2403	0.8	2703	0.8	2603	0.8	2903	0.9	3003	0.9	3043	0.9
18	2503	0.8	2503	0.8	2603	0.8	2503	0.8	2803	0.8	2703	0.8	3003	0.9	3103	0.9	3143	0.9
19	2603	0.8	2603	0.8	2703	0.8	2603	0.8	2903	0.8	2803	0.8	3103	0.9	3203	0.9	3243	0.9
20	2703	0.8	2703	0.8	2803	0.8	2703	0.8	3003	0.8	2903	0.8	3203	0.9	3303	0.9	3343	0.9
21	2803	0.8	2803	0.8	2903	0.8	2803	0.8	3103	0.8	3003	0.8	3303	0.9	3403	0.9	3443	0.9
22	2903	0.8	2903	0.8	3003	0.8	2903	0.8	3203	0.8	3103	0.8	3403	0.9	3503	0.9	3543	0.9
23	3003	0.8	3003	0.8	3103	0.8	3003	0.8	3303	0.8	3203	0.8	3503	0.9	3603	0.9	3643	0.9
24	3103	0.8	3103	0.8	3203	0.8	3103	0.8	3403	0.8	3303	0.8	3603	0.9	3703	0.9	3743	0.9
25	3203	0.8	3203	0.8	3303	0.8	3203	0.8	3503	0.8	3403	0.8	3703	0.9	3803	0.9	3843	0.9
26	3303	0.8	3303	0.8	3403	0.8	3303	0.8	3603	0.8	3503	0.8	3803	0.9	3903	0.9	3943	0.9
27	3403	0.8	3403	0.8	3503	0.8	3403	0.8	3703	0.8	3603	0.8	3903	0.9	4003	0.9	4043	0.9
28	3503	0.8	3503	0.8	3603	0.8	3503	0.8	3803	0.8	3703	0.8	4003	0.9	4103	0.9	4143	0.9
29	3603	0.8	3603	0.8	3703	0.8	3603	0.8	3903	0.8	3803	0.8	4103	0.9	4203	0.9	4243	0.9
30	3703	0.8	3703	0.8	3803	0.8	3703	0.8	4003	0.8	3903	0.8	4203	0.9	4303	0.9	4343	0.9
31	3803	0.8	3803	0.8	3903	0.8	3803	0.8	4103	0.8	4003	0.8	4303	0.9	4403	0.9	4443	0.9